

Spazzer® 5400 Spacing and Bridging Bar - 16ga (SPZS-54)

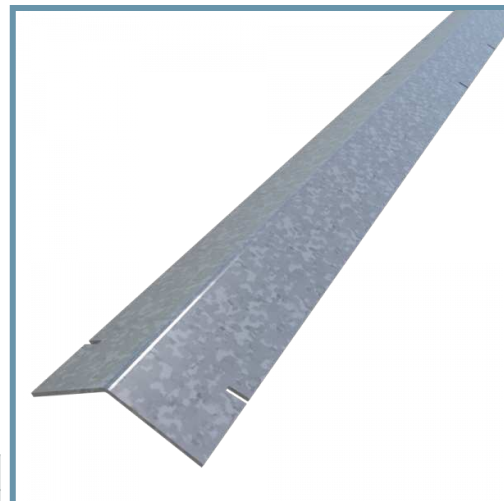
54mils (16ga) Spazzer 5400 (Exterior) Spacing and Bridging Bar

The Spazzer 5400 bar is a prenotched bridging and spacing bar engineered to facilitate the rapid erection of structural wall framing.

Spazzer 5400 (SPZS-54) bar is a prenotched, 54mils (16ga), 50" long galvanized steel spacer and bridging bar, engineered to facilitate the rapid erection of exterior curtainwall framing, load-bearing walls and high interior partitions constructed of structural studs.

For load-bearing studs or for 20ga nonload-bearing studs, the [Spazzer 5400 Bar Guard™](#), the [Spazzer Bar Fly Clip \(SFLY\)](#), the [Spazzer Snap-In Grommet](#) or screws are required to keep the bar in place.

The Spazzer 5400 is not designed for use with 12 ga and heavier structural studs, and should not be used in studs over 8" wide.



Product Data & Ordering Information:

Material:	Grade 50ksi min. (340MPa)
Coating:	CP60 (G90 available)
Thickness:	54mils (16ga), 0.0566" Design Thickness, 0.0538" Min. Thickness
Dimensions:	1-1/4" x 1-1/4" (31.8mm x 31.8mm)
Stock Lengths:	50" Long (1270mm)
Packaging:	20 pieces per carton / 680 pieces per skid
Product Weight:	2.03 lb/piece

- Saves up to 40% in combined labor and material costs.
- Prenotched at 12", 16" and 24" intervals, so no layout is needed.
- Eliminates clip angles and the labor required to install them.

Code Approvals & Performance Standards

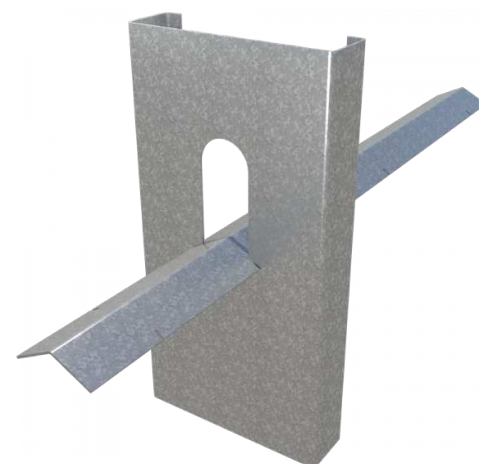
- [ASTM A653](#) Standard Specification for Steel Sheet, Zinc-Coated (Galvanized) or Zinc-Iron Alloy-Coated (Galvannealed) by the Hot-Dip Process
- [ASTM A1003](#) Standard Specification for Steel Sheet, Carbon, Metallic- and Nonmetallic-Coated for Cold-Formed Framing Members
- [SDS For ASTM A1003 Steel Framing Products](#) For Interior Framing, Exterior Framing and Clips/Accessories

Alternative Products:

- [U-channel \(CRC\) with clip angles](#)
- [Blocking and Strapping](#)

Sustainability Credits For more details and LEED letters contact Technical Services at 888-437-3244 or visit clarkdietrich.com/LEED.

- **LEED v4.1 MR Credit:** Environmental Product Declarations: EPD (1 point) - Sourcing of Raw Materials (up to 2 points) - Material Ingredients (1 point) - Construction and Demolition Waste Management (up to 2 points)
- **LEED v4 MR Credit:** Building Product Disclosure and Optimization: EPD (1 point) - Sourcing of Raw Materials (1 point) - Material Ingredients (1 point) - Construction and Demolition Waste Management (up to 2 points) - Innovation Credit (up to 2 points).



Spazzer®
Snap-In
Grommet



Spazzer® Bar Guard™