

UltraBEAD

Vinyl L-Bead with Proprietary Compressible Foam

UltraBEAD creates an easy attachment that is attained with staples through the bead flange. Multiple perforations along the 1-1/8" flange enhance strong compound adhesion and the raised shoulder provides for a flush finish. Rigid vinyl is rust proof, dent resistant and easy to field cut without distorting the profile or leaving sharp edges and burrs.

Composite Firestop/Framing for use in fire-resistant joint systems in or between fire-resistance-rated walls and floor/ceiling or roof/ceiling assemblies. Many assemblies can also be used in smoke barriers with tested air leakage (L ratings) well below the code defined maximum of 5 cfm per linear foot.

When used in conjunction with UltraTRAK slotted deflection track or Deep Leg deflection tracks, UltraBEAD is UL 2079-Fifth Edition compliant. Provides joint protection up to 3/4" with various compression extension ratios per the listing.

U.S. Patent Pending

Product Data & Ordering Information:

Vinyl Material: 0.028" PVC (Polyvinyl Chloride)
 L-Bead Dimensions: 1/2" Leg x 1-1/8" Flange (available in rip bead)
 Length: 8-foot long
 Vinyl color: White
 Foam color: Dark Brown

Part Profile	Width	Length	Wt./Ctn.	Pcs./Ctn.
UltraBEAD	1/2"	8'	24 lbs	40
UltraBEAD with Rip Bead	1/2"	8'	18 lbs	30

ASTM & Code Standards:

- SDS & Product Certification Information is available at www.clarkdietrich.com/SupportDocs

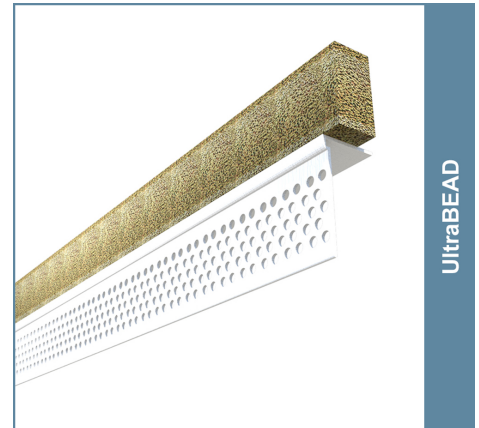
Storage:

All stored materials shall be kept dry. Materials shall be stacked off the ground, supported on a level platform, and protected from the weather.

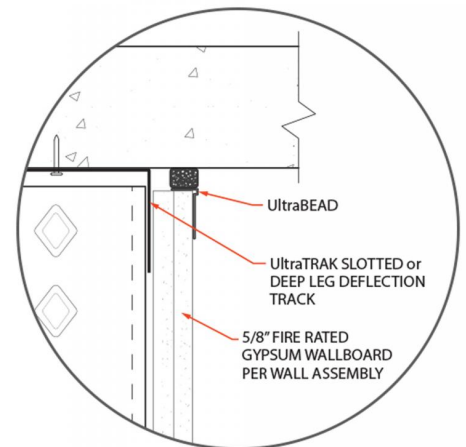
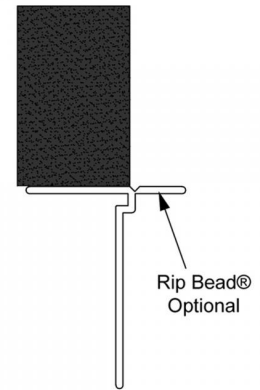
Installation Instructions:

- Splices in the UltraBEAD assembly shall be offset a min of 12" from joints in the Top Track.
- UltraBEAD is to be installed on both sides of wall.
- UltraBEAD horizontal flange to be applied over the top face of the gypsum base, ensuring horizontal and vertical flanges are in contact gypsum base.
- Factory edges have 1/4" of foam overhanging the UltraBEAD, splices are aligned and tightly butted together so foam is compressed, and vinyl L-beads are touching.
- Field splices are cut square with 1/4 in. foam overhang, aligned, and tightly butted together so foam is compressed, and vinyl L-beads are touching.
- Cut to length with a fine-toothed hacksaw or chop saw.
- Make sure to cut ends square (to be butted tightly when spliced)
- Attach UltraBEAD to the gypsum base with 9/16 in (16mm) type G staples, or equivalent, spaced 12 in. (305 m) o.c. maximum along the flange.
- Repeat until all joints have been filled with the UltraBEAD.
- A layer of tape and joint compound may be applied over the UltraBEAD with tape lapping onto the wall only.
- UltraBEAD is compatible with drywall compound and water based paints.

09.22.00 (Support for Plaster & Gypsum Board)



UltraBEAD



Project Information

Name:
Address:

Contractor Information

Name:
Contact:
Phone:
Fax:

Architect Information

Name:
Contact:
Phone:
Fax: