

## UltraTRAK Slotted System

### 1 and 2 Hour rated head of wall assembly for up to 3/4" joints

The UltraTRAK slotted system utilizes UltraTRAK slotted deflection track and UltraBEAD to generate a UL 2079-Fifth Edition compliant, 1 or 2 HR rated assembly with up to 3/4" maximum joint at 60% compression. The UltraTRAK system is used for framing exterior curtain walls and non-load bearing interior walls. This system allows for vertical, live load movement of the primary structure without transferring axial loads to the wall studs. The wall studs are attached to the UltraTRAK through vertical slots using waferhead screws creating a positive connection that allows for vertical movement and also eliminates the requirement for lateral bracing near the top of the wall stud. Deflection track details must be designed for the specific conditions of a building to accommodate the required deflection and end reactions of the studs. Multiple perforations along the 1-1/8" flange of UltraBEAD enhance strong compound adhesion and the raised shoulder provides for a flush finish. The proprietary compressible foam of UltraBEAD creates a tight seal against the underside of the concrete slab.

### Product Data & Ordering Information:

**Material:** Yield Strength: Grade 33ksi for 30mils, 33mils & 43mils - 50ksi for 54mils  
 Coating: G40 EQ for 30mils, All others = CP60 (CP90 available)  
 30mils: 20ga DW, 0.0312" Design Thickness, 0.0296" Min. Thickness  
 33mils: 20ga STR, 0.0346" Design Thickness, 0.0329" Min. Thickness  
 43mils: 18ga, 0.0451" Design Thickness, 0.0428" Min. Thickness  
 54mils: 16ga, 0.0566" Design Thickness, 0.0538" Min. Thickness

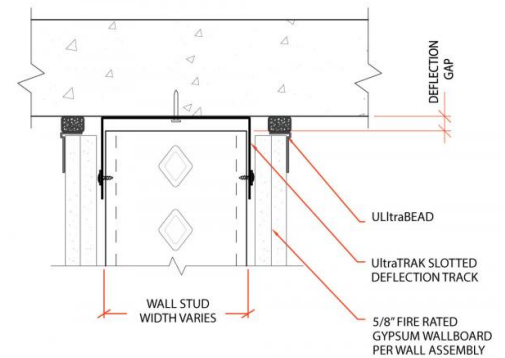
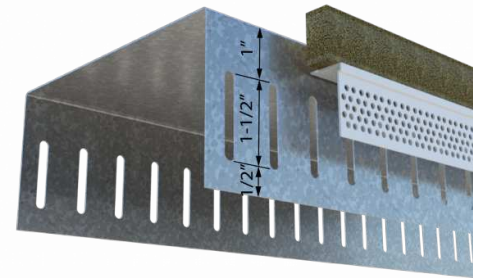
### Dimensions:

Profile	Leg Length (L)	Slot Height (S)	Slot Location Down from Web (SL)	Joint Protection
UltraTRAK slotted	3.00"	1.50"	1.00"	Up to 3/4"

**Inside depth:** Equal to the outside width of the stud  
**Web sizes (W):** 2-1/2", 3-5/8", 4", 6", 8"  
**Vertical slots:** 0.22" wide & spaced every 1" o.c.  
**Track length:** 10'-0"

### Code Approvals & Performance Standards

- **AISI S220-15** North American Standard for CFS Framing - Nonstructural Members
  - (Compliant to ASTM C645 , but IBC replaced with AISI S220 in IBC 2015)
  - Section A4 Material - Chemical & mechanical requirements (Referencing ASTM A1003/A1003M)
  - Section A5 Corrosion Protection (Referencing ASTM A653/A653M)
- **AISI S240-15** North American Standard for Cold-Formed Steel Structural Framing
  - (Compliant to ASTM C955 , but IBC replaced with AISI S200 in IBC 2015, AISI S240 in IBC 2018)
  - Section A3 Material - Chemical & mechanical requirements (Referencing ASTM A1003/A1003M)
  - Section A4 Corrosion Protection (Referencing ASTM A653/A653M)
- **SFIA Stud** Code Compliance Certification Program
- **UL Design HW-D-0924** Joint system
- **UL Design 2079 Fifth Edition** Tests for Fire Resistance of Building Joint Systems
  - (When used in conjunction with UltraBead)
- **SDS For ASTM A1003 Steel Framing Products** For Interior Framing, Exterior Framing and Clips/Accessories



## UltraBEAD

### Vinyl L-Bead with Proprietary Compressible Foam

UltraBEAD creates an easy attachment that is attained with staples through the bead flange. Multiple perforations along the 1-1/8" flange enhance strong compound adhesion and the raised shoulder provides for a flush finish. Rigid vinyl is rust proof, dent resistant and easy to field cut without distorting the profile or leaving sharp edges and burrs.

Composite Firestop/Framing for use in fire-resistant joint systems in or between fire-resistance-rated walls and floor/ceiling or roof/ceiling assemblies. Many assemblies can also be used in smoke barriers with tested air leakage (L ratings) well below the code defined maximum of 5 cfm per linear foot.

### UL 2079 - Fifth Edition Compliant

When used in conjunction with UltraTRAK slotted deflection track or Deep Leg deflection tracks, UltraBEAD is UL 2079-Fifth Edition compliant. Provides joint protection up to 3/4" with various compression extension ratios per the listing.

U.S. Patent Pending

### Product Data & Ordering Information:

<b>Vinyl Material:</b>	0.028" PVC (Polyvinyl Chloride)
<b>L-Bead Dimensions:</b>	1/2" Leg x 1-1/8" Flange (available in rip bead)
<b>Length:</b>	8-foot long
<b>Vinyl color:</b>	White
<b>Foam color:</b>	Dark Brown

Part Profile	Part Number	Width	Length	Wt./Ctn.	Pcs./Ctn.
UltraBEAD	62957	1/2"	8'	24 lbs	40
UltraBEAD with Rip Bead	62958	1/2"	8'	18 lbs	30

### Code Approvals & Performance Standards

- [ASTM C840](#) Standard Specification for Application and Finishing of Gypsum Board
- [ASTM C841](#) Standard Specification for Installation of Interior Lathing and Furring
- [ASTM C1047](#) Standard Specification for Accessories for Gypsum Wallboard and Gypsum Veneer Base
- [ASTM D3678](#) Standard Specification for Rigid Poly(Vinyl Chloride) (PVC) Interior - Profile Extrusions
- [UL Design 2079 Fifth Edition](#) Tests for Fire Resistance of Building Joint Systems
  - (When used in conjunction with UltraTRAK, slotted deflection track or Deep Leg deflection tracks)
  - IBC requires fire-resistant joint systems be tested in accordance w/the requirements of either ASTM E1966 or UL 2079.
- [SDS UltraBEAD Foam](#) For UltraBEAD Foam
- [SDS Vinyl Corp](#) PVC Compounds

### Storage:

All stored materials shall be kept dry. Materials shall be stacked off the ground, supported on a level platform, and protected from the weather.

### Installation Instructions:

- Splices in the UltraBEAD assembly shall be offset a min of 12" from joints in the Top Track.
- UltraBEAD is to be installed on both sides of wall.
- UltraBEAD horizontal flange to be applied over the top face of the gypsum base, ensuring horizontal and vertical flanges are in contact gypsum base.
- Factory edges have 1/4" of foam overhanging the UltraBEAD, splices are aligned and tightly butted together so foam is compressed, and vinyl L-beads are touching.
- Field splices are cut square with 1/4 in. foam overhang, aligned, and tightly butted together so foam is compressed, and vinyl L-beads are touching.
- Cut to length with a fine-toothed hacksaw or chop saw.
- Make sure to cut ends square (to be butted tightly when spliced)
- Attach UltraBEAD to the gypsum base with 9/16 in (16mm) type G staples, or equivalent, spaced 12 in. (305 m) o.c. maximum along the flange.
- Repeat until all joints have been filled with the UltraBEAD.
- A layer of tape and joint compound may be applied over the UltraBEAD with tape lapping onto the wall only.
- UltraBEAD is compatible with drywall compound and water based paints.

