

## 8" Fixed Universal Slip Clip (FUS8-97)

### 97mils (12ga) Rigid or Deflection Connection Clip

ClarkDietrich's Fixed Universal Slip Clip (FUS) is used to attach exterior wall studs to the structure of the building and provided either a rigid OR deflection connection. The FUS clips are available in standard lengths of 6" and 8" in 12ga and 10 ga. and are ideal for medium to larger standoff conditions. Designed to transfer horizontal and/or vertical loads, the FUS clip installs easily to the building with screws, powder-actuated fasteners (PAF), or welds. The FUS clips provide an adjustable standoff to ensure a plumb wall plane.

#### For a Rigid Connections

Attach the Fixed Universal Slip Clip (FUS) to cold-formed steel framing members using (8) #12 self-tapping screws (not included) for the FUS6 clip and (10) #12 self-drilling screws (not included) for the FUS8 clip through the clip holes into the steel framing. For a rigid connection, screws should not be installed in any of the slotted holes.

#### For a Deflection Connection

Attach the Fixed Universal Slip Clip (FUS) to cold-formed steel framing members using proprietary #14 heavy duty deflection screws (included) through the slotted holes and position for the appropriate building deflection. For the FUS6 clip all slotted holes shall have a screw. For the FUS8 clip the (2) outer slotted holes and the (2) stacked slotted holes must have screws. For a deflection connection, screws should not be installed in any unslotted holes.

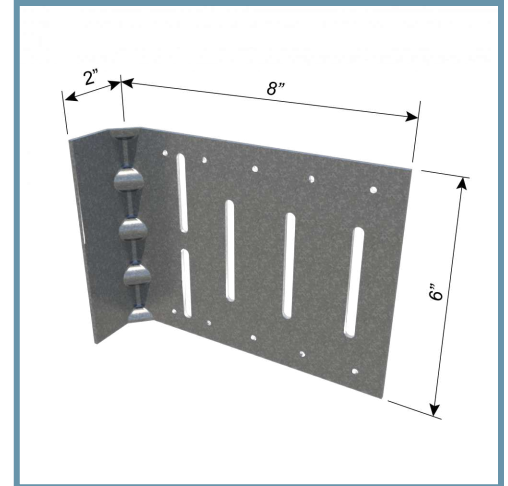
For allowable loads for multiple connection options, reference the Clip & Connector Catalog or [www.clarkdietrich.com/FUS](http://www.clarkdietrich.com/FUS) for more information.

#### Product Data & Ordering Information:

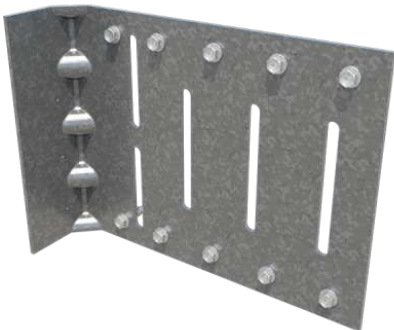
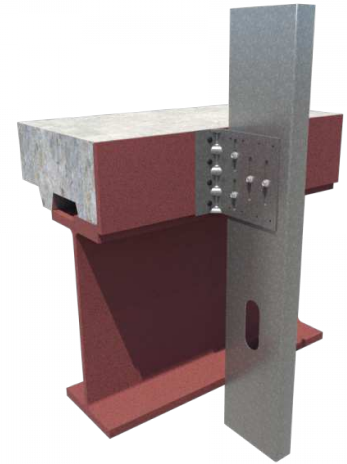
<b>Material:</b>	Structural Grade 50 Type H (ST50H), 50ksi (340 MPa)
<b>Coating:</b>	G90 (Z275) hot-dipped galvanized coating
<b>Thickness:</b>	97mils (12ga) 0.1017" Design thickness 0.0966" Minimum thickness
<b>Dimensions:</b>	2" x 8" x 6" (47.6mm x 203.2mm x 124mm)
<b>Packaging:</b>	10 pieces per box (1 bag/80screws)
<b>Product Weight:</b>	1.68 lb / piece

#### Code Approvals & Performance Standards

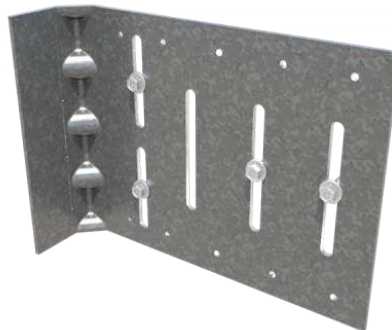
- [ASTM A653](#) Standard Specification for Steel Sheet, Zinc-Coated (Galvanized) or Zinc-Iron Alloy-Coated (Galvannealed) by the Hot-Dip Process
- [ASTM A1003](#) Standard Specification for Steel Sheet, Carbon, Metallic- and Nonmetallic-Coated for Cold-Formed Framing Members
- [SDS For ASTM A1003 Steel Framing Products](#) For Interior Framing, Exterior Framing and Clips/Accessories



- Eliminates shims and scabs
- Provides vertical movement up to 1" when installed as a deflection application
- Fast, one-piece universal installation. No left or right-handed clips
- Higher capacities when used in applications where significantly higher capacities are required.
- Designed to transfer large horizontal or horizontal and vertical loads



Rigid  
Connection



Deflection  
Connection

\*\*\* FUS clip can be installed as a rigid connection only **OR** deflection connection only \*\*\*



Proprietary  
HD Deflection Screw  
(10ga and 12ga Clips Only)