

Grommets

Grommets for steel wall stud framing

Grommets snap easily into stud knockouts and are used to protect electrical wiring and plumbing lines from directly contacting metal. Grommets must be used in construction when metal conduit is not required by building code.

- Snaps quickly into stud knockout
- Prevents/eliminates pipe rattle
- 1-1/2" Standard Grommets fit all size studs except 1-5/8" and 2-1/2"
- 3/4" Snap-In Grommets fits 1-5/8" and 2-1/2" wall framing

Product Data & Ordering Information:

Product Code	Size	Description	Pcs./Carton
GROM	3/4"	3/4" Snap-In Grommet For 1-5/8" and 2-1/2" studs	100
	1-1/2"	1-1/2" 2-Piece Grommet For 3-1/2" and wider studs	100

Installation:

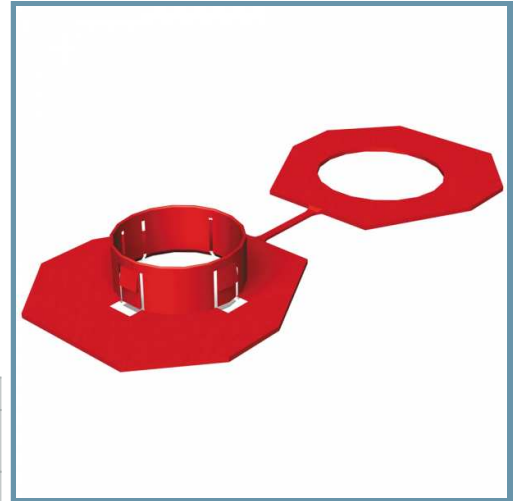
Install grommets in all stud knockouts where wiring and plumbing lines will be inserted.

3/4" Snap-In Grommet for 1-5/8" and 2-1/2" wall studs

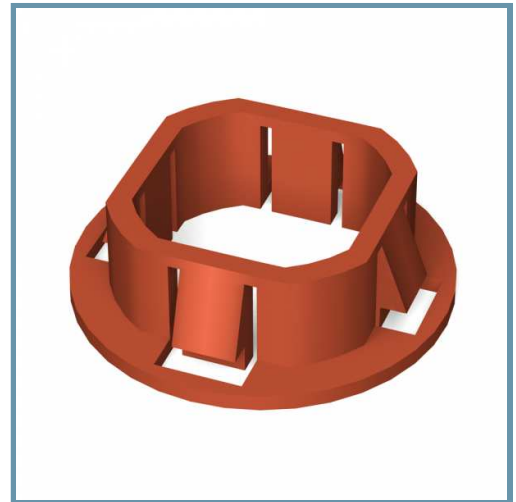
Install the 3/4" Snap-In Grommet by pressing the grommet into the stud knockout. Make sure to engage the grommet lips to secure into place.

1-1/2" 2-Piece Grommet for all wall studs 3-1/2" and wider

Install the standard 1-1/2" 2-Piece Grommet by first opening the grommet. Insert one side of the grommet through the knockout. Snap the grommet together so it engages with the metal sandwiched between the two plastic halves.



1-1/2" 2-Piece Grommet



3/4" Snap-In Grommet

