

## #701B/#801B L-TRIM

### Applied after panel installation to finish veneer plaster edges at wall terminations

Veneer trims 701B and 801B are L-shaped trims designed for use at junctions of veneer gypsum base with rough concrete or masonry ceilings. Sized to fit 1/2" and 5/8" gypsum plaster base, 701B provides 3/32" grounds for two-coat veneer, and 801B has 1/16" grounds for one-coat veneer plaster. Available in standard length of 8' and 10'.

Material: 0.013 min. G-30 Hot-Dipped Galvanized Steel

Also available in 99.97% pure zinc, compliant with ASTM B69

### Product Data & Ordering Information:

Product Code	Type	Grounds	Width	Length	Pcs./Ctn.
M71B	701B	3/32"	1/2"	8' or 10'	50
M71B	701B	3/32"	5/8"	8' or 10'	50
M81B	801B	1/16"	1/2"	8' or 10'	50
M81B	801B	1/16"	5/8"	8' or 10'	50



### Code Approvals & Performance Standards

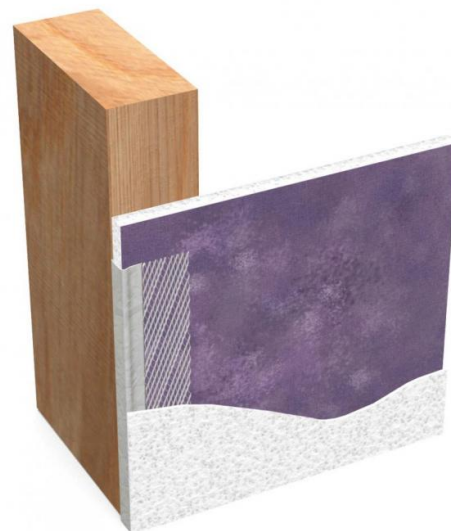
- [ASTM A653](#) Standard Specification for Steel Sheet, Zinc-Coated (Galvanized) or Zinc-Iron Alloy-Coated (Galvannealed) by the Hot-Dip Process
- [ASTM C840](#) Standard Specification for Application and Finishing of Gypsum Board
- [ASTM C841](#) Standard Specification for Installation of Interior Lathing and Furring
- [SDS For ASTM A653 Steel Finishing Products](#) For Interior Finishing and Exterior Finishing

### Storage:

All stored materials shall be kept dry. Materials shall be stacked off the ground, supported on a level platform, and protected from the weather.

**Sustainability Credits** For more details and LEED letters contact Technical Services at 888-437-3244 or visit [clarkdietrich.com/LEED](http://clarkdietrich.com/LEED).

- **LEED v4.1 MR Credit:** Environmental Product Declarations: EPD (1 point) - Sourcing of Raw Materials (up to 2 points) - Material Ingredients (1 point) - Construction and Demolition Waste Management (up to 2 points)
- **LEED v4 MR Credit:** Building Product Disclosure and Optimization: EPD (1 point) - Sourcing of Raw Materials (1 point) - Material Ingredients (1 point) - Construction and Demolition Waste Management (up to 2 points) - Innovation Credit (up to 2 points).



- Mini-mesh flanges for keying
- Eliminates shadowing
- Galvanized coated for corrosion protection
- Also available in zinc