

#701A/#801A J-TRIM

Provides clean, neat edge protection at gypsum panel terminations for one- and two-coat veneer plaster finishes

Veneer trims 701A and 801A are J-shaped trims formed from galvanized steel to fit standard 1/2" and 5/8" gypsum panel depths with grounds to accommodate veneer finishes. These trims provide clean, neat edge protection for one- or two-coat veneer plaster finishes at gypsum panel terminations to wall openings and wall or ceiling intersections. 701A provides 3/32" grounds for two-coat veneers and 801A has 1/16" grounds for one-coat veneer plaster.

Material: .013 G-30 Hot-Dipped Galvanized Steel

Also available in 99.97% pure zinc, compliant with ASTM B69

Product Data & Ordering Information:

Product Code	Type	Grounds	Width	Length	Pcs./Ctn.
M71A	701A	3/32"	1/2"	8' or 10'	50
M71A	701A	3/32"	5/8"	8' or 10'	50
M81A	801A	1/16"	1/2"	8' or 10'	50
M81A	801A	1/16"	5/8"	8' or 10'	50



Code Approvals & Performance Standards

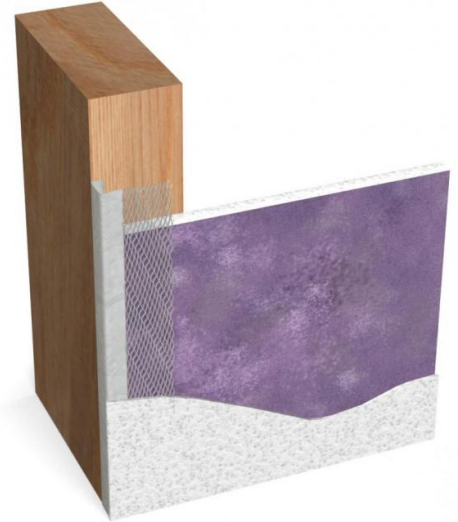
- [ASTM A653](#) Standard Specification for Steel Sheet, Zinc-Coated (Galvanized) or Zinc-Iron Alloy-Coated (Galvannealed) by the Hot-Dip Process
- [ASTM C840](#) Standard Specification for Application and Finishing of Gypsum Board
- [ASTM C841](#) Standard Specification for Installation of Interior Lathing and Furring
- [SDS For ASTM A653 Steel Finishing Products](#) For Interior Finishing and Exterior Finishing

Storage:

All stored materials shall be kept dry. Materials shall be stacked off the ground, supported on a level platform, and protected from the weather.

Sustainability Credits For more details and LEED letters contact Technical Services at 888-437-3244 or visit clarkdietrich.com/LEED.

- **LEED v4.1 MR Credit:** Environmental Product Declarations: EPD (1 point) - Sourcing of Raw Materials (up to 2 points) - Material Ingredients (1 point) - Construction and Demolition Waste Management (up to 2 points)
- **LEED v4 MR Credit:** Building Product Disclosure and Optimization: EPD (1 point) - Sourcing of Raw Materials (1 point) - Material Ingredients (1 point) - Construction and Demolition Waste Management (up to 2 points) - Innovation Credit (up to 2 points).



- Mini-mesh flanges for plaster keying
- Eliminates shadowing