

Product category: ProSTUD® 33MIL Drywall Stud
Product name: 362PDS125-33 33ksi G40EQ - Punched
 3-5/8" ProSTUD 33MIL (33mil)

Coating: G40EQ
 Color coding: White

Geometric Properties

Web depth	3.625 in	Weight	0.752 lb/ft
Flange width	1.250 in	Punchout width	1.500 in
Stiffening lip	0.250 in	Punchout length	2.500 in
Design thickness	0.0346 in	Minimum thickness	0.0329 in
Yield stress, Fy	33 ksi		

Gross Section Properties of Full Section, Strong Axis

Cross sectional area (A)	0.221 in ²
Moment of inertia (Ix)	0.439 in ⁴
Radius of gyration (Rx)	1.409 in
Gross moment of inertia (Iy)	0.041 in ⁴
Gross radius of gyration (Ry)	0.433 in

Effective Section Properties, Strong Axis

Effective area (Ae)	0.127 in ²
Moment of inertia for deflection (Ixe)	0.439 in ⁴
Section modulus (Sxe)	0.200 in ³
Allowable bending moment (Ma)	3,943 in-lbs
Allowable shear force in web (Unpunched) (Vag)	1,024 lb
Allowable shear force in web (Punched) (Vanet)	541 lb

Torsional Properties

St. Venant torsion constant (J x 1000)	0.0882 in ⁴
Warping constant (Cw)	0.106 in ⁶
Distance from shear center to neutral axis (Xo)	-0.816 in
Radii of gyration (Ro)	1.685 in
Torsional flexural constant (Beta)	0.766

Unbraced Length (Lu) 29.6 in

Notes:

- Calculated properties are based on AISI S100-12, North American Specification for Design of Cold-Formed Steel Structural Members and AISI S220-15, North American Standard for Cold-Formed Steel Framing - Nonstructural Members.
- Effective properties incorporate the strength increase from the cold work of forming as applicable per AISI A7.2.
- Tabulated gross properties, including torsional properties, are based on full-unreduced cross section of the studs, away from punchouts.
- For deflection calculations, use the effective moment of inertia.
- Allowable moment includes cold work of forming.
- Allowable moment is taken as the lowest value based on local or distortional buckling. Distortional buckling strength is based on a k-phi = 0.
- East Coast Punch Pattern: Center of knockouts are 12" from the leading edge then 48" o.c.
- West Coast Punch Pattern: Center of knockouts are 24" from the leading edge then 24" o.c.

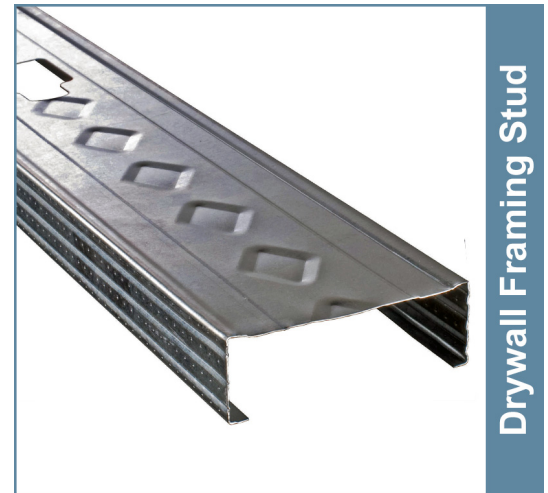
Sustainability Credits:

For more details and LEED letters contact Technical Services at 888-437-3244 or visit www.clarkdietrich.com/LEED

LEED v4 MR Credit -- Building Product Disclosure and Optimization: EPD (1 point) - Sourcing of Raw Materials (1 point) - Material Ingredients (1 point) - Construction and Demolition Waste Management (up to 2 points) - Innovation Credit (up to 2 points).

LEED 2009 Credit MR 2 & MR 4 -- ClarkDietrich's steel products are 100% recyclable and have a national average recycled content of 34.2% (19.8% post-consumer and 14.4% pre-consumer). If seeking a higher number to meet Credit MR 5, please contact us at (info@clarkdietrich.com / 888-437-3244)

09.22.16 (Non-Structural Metal Framing)



Drywall Framing Stud

* Embossments in web are only placed on sections 2-1/2" and wider.

ASTM & Code Standards:

- AISI S100-12 & S220-15
- Meets or exceeds ASTM C645 & C754
- ASTM E119, E72 & E90
- Intertek CCRR-0207, LA RR 26019
- ProSTUD complies with the SFIA Code Compliance Certification Program
- Multiple UL® Design Listing including: V438, V450 & U419
- SDS & Product Certification Information available at www.clarkdietrich.com
- U.S. Patent No. 9,010,070



Project Information

Name:
Address:

Contractor Information

Name:
Contact:
Phone:
Fax:

Architect Information

Name:
Contact:
Phone:
Fax:

Product category: ProSTUD® 33MIL Drywall Stud
Product name: 362PDS125-33 33ksi G40EQ - Punched
 3-5/8" ProSTUD 33MIL (33mil)

3-5/8" ProSTUD 33MIL (33mil) Drywall Stud - COMPOSITE Limiting Heights (AC86-2015)

(1 layer) 5/8" Type X Gypsum Board

Spacing (inches)	5 psf			7.5 psf			10 psf		
	L/120	L/240	L/360	L/120	L/240	L/360	L/120	L/240	L/360
12	26'-7"	21'-2"	18'-5"	23'-3"	18'-5"	16'-1"	21'-2"	16'-9"	14'-8"
16	24'-2"	19'-2"	16'-9"	21'-2"	16'-9"	14'-8"	19'-2"	15'-3"	13'-4"
24	21'-2"	16'-9"	14'-8"	18'-5"	14'-8"	12'-10"	16'-9"	13'-4"	11'-6"

Composite Table Notes:

- Allowable composite limiting heights were determined in accordance with ICC-ES AC86-2015.
- Additional composite wall testing and analysis requirements of the SFIA Code Compliance Certification Program were observed.
- In accordance with current building codes and AISI design standards, the 1/3 Stress Increase for strength was not used.
- The composite limiting heights provided in the tables are based on a single layer of type X gypsum board from the following manufacturers: American, CertainTeed, Georgia Pacific, Continental, National, PABCO, and USG.
- The gypsum board must be applied full height in the vertical orientation to each stud flange and installed in accordance with ASTM C754 using minimum No. 6 Type X Drywall screws spaced as listed below:
- Screws spaced a minimum of 16 in on-center to framing members spaced at 16 in or 12 in on-center.
- Screws spaced a minimum of 12 in on-center to framing members spaced at 24 in on-center.
- No fasteners are required for attaching the stud to the track except as detailed in ASTM C754.
- Stud end bearing must be a minimum of 1 inch.
- f: Adjacent to the height value indicates that flexural stress controls the allowable wall height.
- s: Adjacent to the height value indicates that shear/end reaction controls the allowable wall height.

3-5/8" ProSTUD 33MIL (33mil) Drywall Stud - NON-COMPOSITE Limiting Heights (FULLY BRACED)

Spacing (inches)	5 psf			7.5 psf			10 psf		
	L/120	L/240	L/360	L/120	L/240	L/360	L/120	L/240	L/360
12	22'-7"	17'-11"	15'-8"	18'-9"	15'-8"	13'-8"	16'-3"	14'-3"	12'-5"
16	19'-10"	16'-3"	14'-3"	16'-3"	14'-3"	12'-5"	14'-0"	12'-11"	11'-3"
24	16'-3"	14'-3"	12'-5"	13'-3"	12'-5"	10'-10"	11'-6"	11'-3"	9'-10"

Non-Composite (Fully Braced) Table Notes:

- Heights are based on AISI S100-12, North American Specification, and AISI S220-15, North American Standard for Cold-Formed Steel Framing - Nonstructural Members, using steel properties alone.
- Above listed Non-Composite Limiting Heights are applicable when the unbraced length is less than or equal to Lu.
- Heights are limited by moment, deflection, shear, and web crippling (assuming 1" end reaction bearing).

3-5/8" ProSTUD 33MIL (33mil) Drywall Stud - NON-COMPOSITE Limiting Heights (BRACED at 48" o.c.)

Spacing (inches)	5 psf			7.5 psf			10 psf		
	L/120	L/240	L/360	L/120	L/240	L/360	L/120	L/240	L/360
12	21'-3"	17'-11"	15'-8"	17'-4"	15'-8"	13'-8"	15'-0"	14'-3"	12'-5"
16	18'-5"	16'-3"	14'-3"	15'-0"	14'-3"	12'-5"	13'-0"	12'-11"	11'-3"
24	15'-0"	14'-3"	12'-5"	12'-3"	12'-3"	10'-10"	10'-8"	10'-8"	9'-10"

Non-Composite (Braced at 48" o.c.) Table Notes:

- Heights are based on AISI S100-12, North American Specification, and AISI S220-15, North American Standard for Cold-Formed Steel Framing - Nonstructural Members, using steel properties alone.
- Above listed Non-Composite Limiting Heights are based on discreet stud bracing at 4 ft o.c.
- Heights are limited by moment, deflection, shear, and web crippling (assuming 1" end reaction bearing).

Project Information

Name:
Address:

Contractor Information

Name:
Contact:
Phone:
Fax:

Architect Information

Name:
Contact:
Phone:
Fax: