

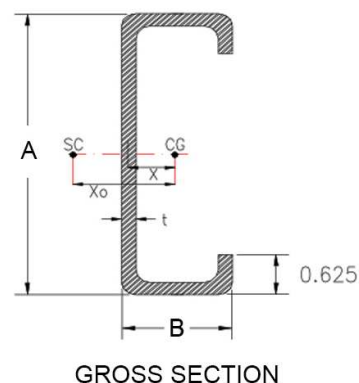
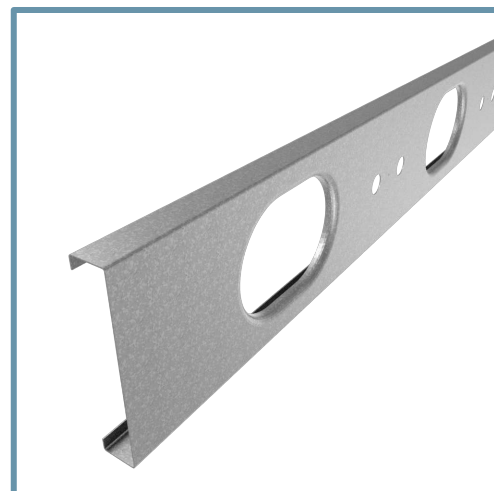
11-1/4" TradeReady® Floor Joist (1125TDJ24-175-97)

Floor Joist with extruded holes

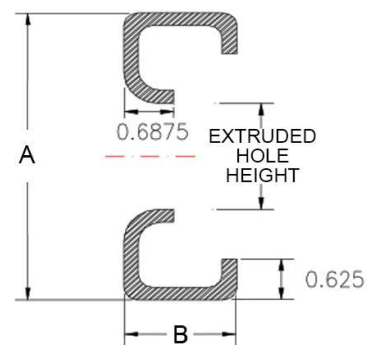
Geometric Properties

Web depth (A): 11.25 in	Extruded hole shape: Ellipse	Design thickness: 0.1017 in
Flange width (B): 1.75 in	Extruded hole Height: 6.25"	Min. steel thickness: 0.0966 in
Extruded hole spacing: 24 in	Extruded hole width: 9"	Yield stress, Fy: 50 ksi
Coating: CP60		

Gross Section Properties of Full Section	
Cross sectional area	1.550 in ²
Member weight per foot of length	5.087 lbs/ft
Moment of inertia (Ix)	24.283 in ⁴
Radius of gyration (Rx)	3.959 in
Gross moment of inertia (Iy)	0.445 in ⁴
Gross radius of gyration (Ry)	0.536 in
Net Section Properties (at Extruded Hole)	
Cross sectional area (A net)	1.025 in ²
Moment of inertia (Ix net)	23.332 in ⁴
Radius of gyration (Rx net)	4.772 in
Net moment of inertia (Iy net)	0.359 in ⁴
Net radius of gyration (Ry net)	0.592 in
Allowable Capacities (Fully Braced)	
Local Moment at Full Section (Mal-full)	124.55 in-kips
Distortional Moment at Full Section (Mad-full)	110.42 in-kips
Local Moment at Knockout (Mal-kno)	124.19 in-kips
Distortional Moment at Knockout (Mad-kno)	93.32 in-kips
Shear at Knockout (Va-kno)	4208 lbs
Shear at Full Section (Va-full)	8714 lbs
Torsional Section Properties	
Distance between centroid and shear-center (Xo)	-0.856 in
Distance between centroid and web-centerline (X)	0.284 in
St. Venant torsional constant (J*1000)	5.345 in ⁴
Torsional warping constant (Cw)	12.023 in ⁶
Radii of gyration (Ro)	4.087 in
Torsional flexural constant (Beta)	0.956
Unbraced Length (Lu)	33.7 in
Effective Section Properties	
Moment of inertia (Ixe)	24.200 in ⁴
Section modulus (Sxe)	4.160 in ³



GROSS SECTION



NET SECTION

Code Approvals & Performance Standards

- **AISI S100-16 (2020) w/S2-20** North American Specification for the Design of Cold-Formed Steel Structural Members
 - Direct Strength Method (DSM) utilized for calculating flexural strength
- **AISI S240-15** North American Standard for Cold-Formed Steel Structural Framing
 - Section A3 Material - Chemical & mechanical requirements (Referencing ASTM A1003/A1003M)
 - Section A4 Corrosion Protection (Referencing ASTM A653/A653M)
 - Section A5 Products - Thickness, shapes, tolerances, identification
- **SDS For ASTM A1003 Steel Framing Products** For Interior Framing, Exterior Framing and Clips/Accessories