

TradeReady® Floor Joist

Product category 10" 2" Flange 14ga TradeReady Joist
 Product name 1000TDW200-68 (50ksi) - Punched Finish: CP60

Geometric Properties

Web depth	10.000 in	Design thickness	0.0713 in
Flange width	2.000 in	Min. steel thickness	0.0677 in
Stiffening lip	0.625 in	Yield stress	Fy 50ksi
		Ultimate, Fu	65 ksi

Gross Section Properties of Full Section

Cross sectional area (A)	1.049 in ²
Member weight per foot of length	3.432 lbs/ft
Moment of inertia (Ix)	13.99 in ⁴
Radius of gyration (Rx)	3.652 in
Gross moment of inertia (Iy)	0.460 in ⁴
Gross radius of gyration (Ry)	0.662 in

Net Section Properties (at knockout)

Cross sectional area (A)	0.659 in ²
Moment of inertia (Ix)	13.11 in ⁴
Radius of gyration (Rx)	4.461 in
Gross moment of inertia (Iy)	0.335 in ⁴
Gross radius of gyration (Ry)	0.714 in

Allowable Capacities

Fully Braced Allowable Moment at Knockout (Ma-kno)	66,582 in-lbs
Fully Braced Allowable Moment at Full Section (Ma-full)	72,416 in-lbs
Allowable Shear at Knockout (Va-kno)	2,282 lbs
Allowable Shear at Full Section (Va-full)	3,346 lbs

Torsional Section Properties

Distance between centroid and shear-center (Xo)	-1.120 in
Distance between centroid and web-centerline (X)	0.391 in
St. Venant torsional constant (J*1000)	1.776 (in ⁴)
Torsional warping constant (Cw)	9.397 (in ⁶)
Radii of gyration (Ro)	3.877 in
Torsional flexural constant (Beta)	0.917

Effective Section Properties

Moment of inertia (Ix)	13.66 (in ⁴)
Section modulus (Sx)	2.419 (in ³)

ASTM & Code Standards:

- AISI North American Specification [NASPEC] 2004
- Structural framing is produced to meet or exceed ASTM C955
- Sheet steel meets or exceeds mechanical and chemical requirements of ASTM A1003
- SDS & Product Certification Information is available at www.clarkdietrich.com/SupportDocs
- U.S. Patent Nos. 6,301,854; 6,691,478; 6,418,694; 6,691,487; 6,761,005; 7,240,459
- Canadian Patent No. 2319346, Mexican Patent No. 243294

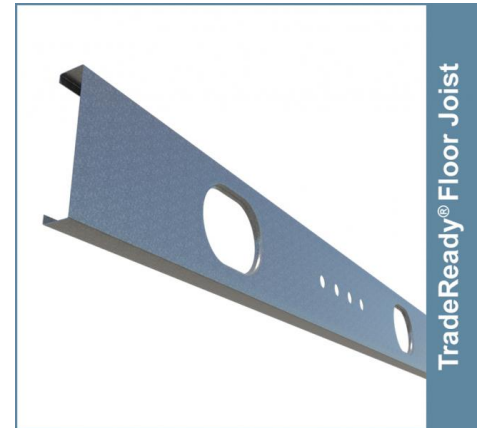
Sustainability Credits:

For more details and LEED letters contact Technical Services at 888-437-3244 or visit www.clarkdietrich.com/LEED

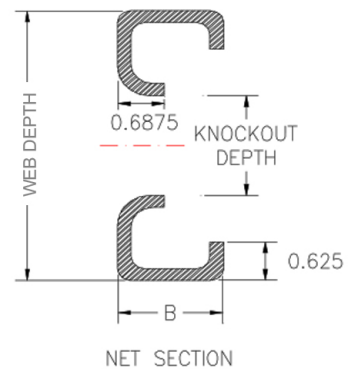
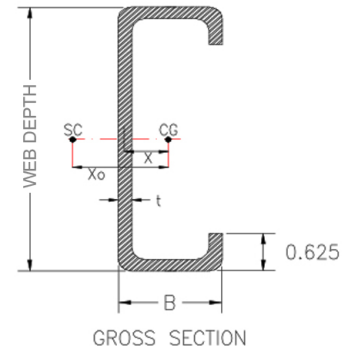
LEED v4 MR Credit -- Building Product Disclosure and Optimization: EPD (1 point) - Sourcing of Raw Materials (1 point) - Material Ingredients (1 point) - Construction and Demolition Waste Management (up to 2 points) - Innovation Credit (up to 2 points).

LEED 2009 Credit MR 2 & MR 4 -- ClarkDietrich's steel products are 100% recyclable and have a national average recycled content of 34.2% (19.8% post-consumer and 14.4% pre-consumer). If seeking a higher number to meet Credit MR 5, please contact us at (info@clarkdietrich.com / 888-437-3244)

05.40.00 (Cold-Formed Metal Framing)



TradeReady® Floor Joist



Project Information

Name:
Address:

Contractor Information

Name:
Contact:
Phone:
Fax:

Architect Information

Name:
Contact:
Phone:
Fax: