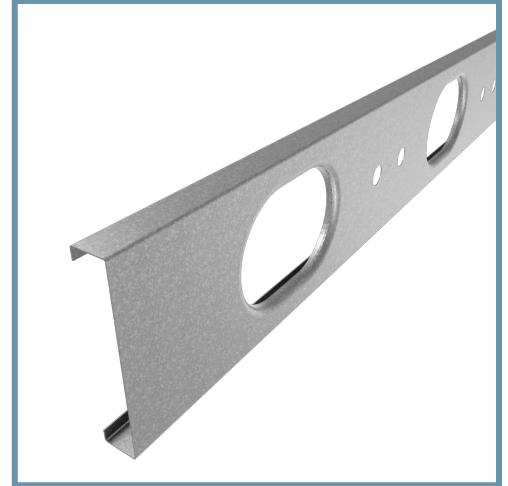


10" TradeReady® Floor Joist (1000TDW24-200-68)

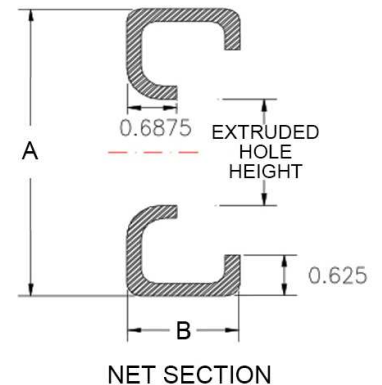
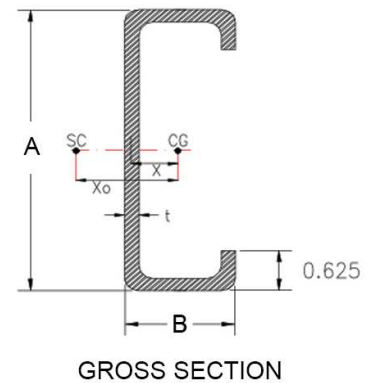
Floor Joist with extruded holes

Geometric Properties

Web depth (A): 10.00 in	Extruded hole shape: Ellipse	Design thickness: 0.0713 in
Flange width (B): 2.00 in	Extruded hole Height: 6.25"	Min. steel thickness: 0.0677 in
Extruded hole spacing: 24 in	Extruded hole width: 6.25"	Yield stress, Fy: 50 ksi
Coating: CP60		



Gross Section Properties of Full Section	
Cross sectional area	1.049 in ²
Member weight per foot of length	3.432 lbs/ft
Moment of inertia (Ix)	13.984 in ⁴
Radius of gyration (Rx)	3.651 in
Gross moment of inertia (Iy)	0.459 in ⁴
Gross radius of gyration (Ry)	0.662 in
Net Section Properties (at Extruded Hole)	
Cross sectional area (A net)	0.687 in ²
Moment of inertia (Ix net)	13.370 in ⁴
Radius of gyration (Rx net)	4.411 in
Net moment of inertia (Iy net)	0.348 in ⁴
Net radius of gyration (Ry net)	0.712 in
Allowable Capacities (Fully Braced)	
Local Moment at Full Section (Mal-full)	68.49 in-kips
Distortional Moment at Full Section (Mad-full)	65.48 in-kips
Local Moment at Knockout (Mal-kno)	80.06 in-kips
Distortional Moment at Knockout (Mad-kno)	60.94 in-kips
Shear at Knockout (Va-kno)	2273 lbs
Shear at Full Section (Va-full)	3345 lbs
Torsional Section Properties	
Distance between centroid and shear-center (Xo)	-1.120 in
Distance between centroid and web-centerline (X)	0.391 in
St. Venant torsional constant (J*1000)	1.779 in ⁴
Torsional warping constant (Cw)	9.401 in ⁶
Radii of gyration (Ro)	3.877 in
Torsional flexural constant (Beta)	0.917
Unbraced Length (Lu)	39.6 in
Effective Section Properties	
Moment of inertia (Ixe)	13.596 in ⁴
Section modulus (Sxe)	2.288 in ³



Code Approvals & Performance Standards

- [AISI S100-16 \(2020\) w/S2-20](#) North American Specification for the Design of Cold-Formed Steel Structural Members
 - Direct Strength Method (DSM) utilized for calculating flexural strength
- [AISI S240-15](#) North American Standard for Cold-Formed Steel Structural Framing
 - Section A3 Material - Chemical & mechanical requirements (Referencing ASTM A1003/A1003M)
 - Section A4 Corrosion Protection (Referencing ASTM A653/A653M)
 - Section A5 Products - Thickness, shapes, tolerances, identification
- [SDS For ASTM A1003 Steel Framing Products](#) For Interior Framing, Exterior Framing and Clips/Accessories