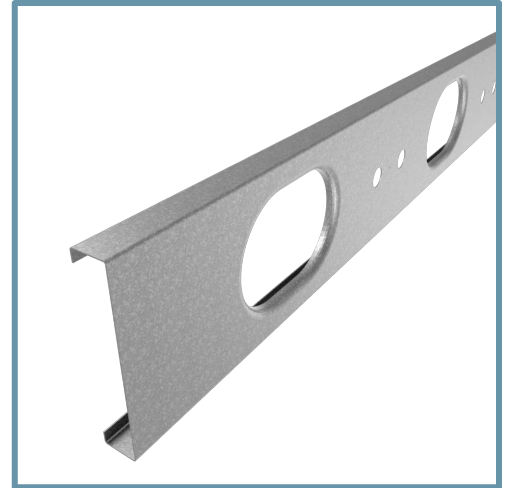


11-1/4" TradeReady® Floor Joist (1125TDJ24-175-54)

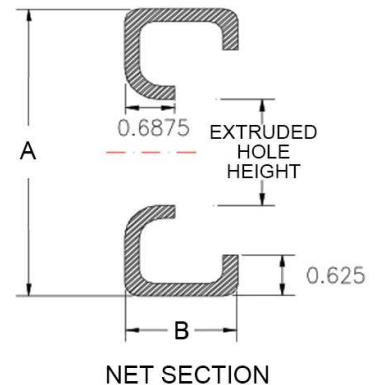
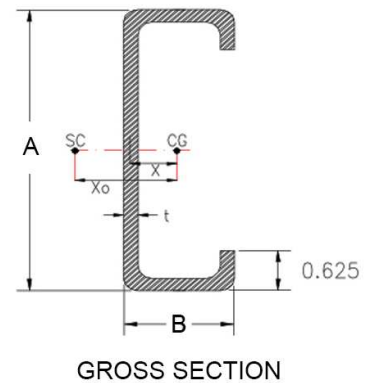
Floor Joist with extruded holes

Geometric Properties

Web depth (A): 11.25 in	Extruded hole shape: Ellipse	Design thickness: 0.0566 in
Flange width (B): 1.75 in	Extruded hole Height: 6.25"	Min. steel thickness: 0.0538 in
Extruded hole spacing: 24 in	Extruded hole width: 9"	Yield stress, Fy: 50 ksi
Coating: CP60		



Gross Section Properties of Full Section	
Cross sectional area	0.882 in ²
Member weight per foot of length	2.886 lbs/ft
Moment of inertia (Ix)	14.162 in ⁴
Radius of gyration (Rx)	4.008 in
Gross moment of inertia (Iy)	0.279 in ⁴
Gross radius of gyration (Ry)	0.563 in
Net Section Properties (at Extruded Hole)	
Cross sectional area (A net)	0.597 in ²
Moment of inertia (Ix net)	13.694 in ⁴
Radius of gyration (Rx net)	4.791 in
Net moment of inertia (Iy net)	0.228 in ⁴
Net radius of gyration (Ry net)	0.618 in
Allowable Capacities (Fully Braced)	
Local Moment at Full Section (Mal-full)	48.89 in-kips
Distortional Moment at Full Section (Mad-full)	48.46 in-kips
Local Moment at Knockout (Mal-kno)	72.89 in-kips
Distortional Moment at Knockout (Mad-kno)	43.75 in-kips
Shear at Knockout (Va-kno)	1328 lbs
Shear at Full Section (Va-full)	1471 lbs
Torsional Section Properties	
Distance between centroid and shear-center (Xo)	-0.899 in
Distance between centroid and web-centerline (X)	0.303 in
St. Venant torsional constant (J*1000)	0.942 in ⁴
Torsional warping constant (Cw)	7.319 in ⁶
Radius of gyration (Ro)	4.148 in
Torsional flexural constant (Beta)	0.953
Unbraced Length (Lu)	34.6 in
Effective Section Properties	
Moment of inertia (Ixe)	13.019 in ⁴
Section modulus (Sxe)	1.633 in ³



Code Approvals & Performance Standards

- [AISI S100-16 \(2020\) w/S2-20](#) North American Specification for the Design of Cold-Formed Steel Structural Members
 - Direct Strength Method (DSM) utilized for calculating flexural strength
- [AISI S240-15](#) North American Standard for Cold-Formed Steel Structural Framing
 - Section A3 Material - Chemical & mechanical requirements (Referencing ASTM A1003/A1003M)
 - Section A4 Corrosion Protection (Referencing ASTM A653/A653M)
 - Section A5 Products - Thickness, shapes, tolerances, identification
- [SDS For ASTM A1003 Steel Framing Products](#) For Interior Framing, Exterior Framing and Clips/Accessories