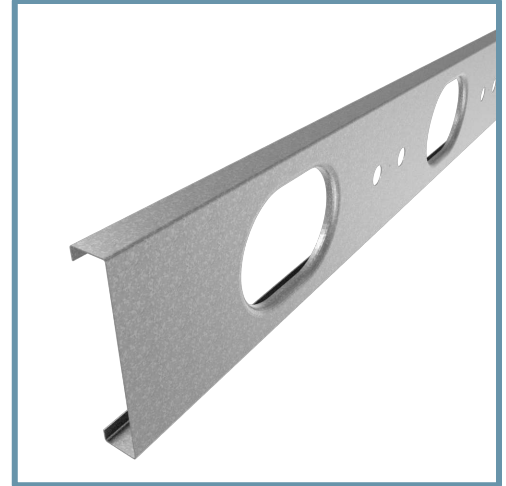


7-1/4" TradeReady® Floor Joist (725TDJ24-175-97)

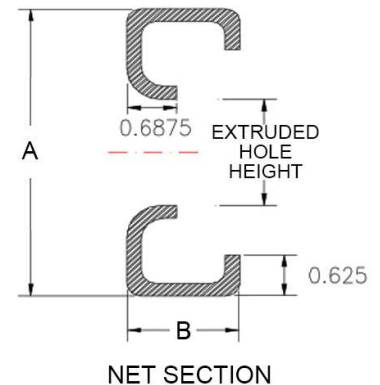
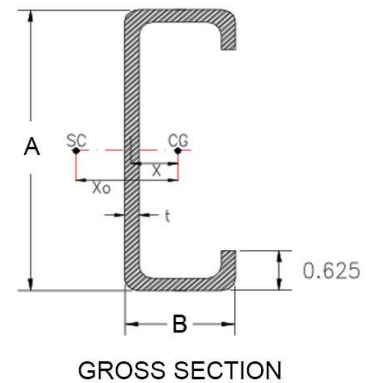
Floor Joist with extruded holes

Geometric Properties

Web depth (A): 7.25 in	Extruded hole shape: Ellipse	Design thickness: 0.1017 in
Flange width (B): 1.75 in	Extruded hole Height: 4.25"	Min. steel thickness: 0.0966 in
Extruded hole spacing: 24 in	Extruded hole width: 7"	Yield stress, Fy: 50 ksi
Coating: CP60		



Gross Section Properties of Full Section	
Cross sectional area	1.143 in ²
Member weight per foot of length	3.758 lbs/ft
Moment of inertia (Ix)	8.170 in ⁴
Radius of gyration (Rx)	2.674 in
Gross moment of inertia (Iy)	0.101 in ⁴
Gross radius of gyration (Ry)	0.297 in
Net Section Properties (at Extruded Hole)	
Cross sectional area (A net)	0.821 in ²
Moment of inertia (Ix net)	8.046 in ⁴
Radius of gyration (Rx net)	3.130 in
Net moment of inertia (Iy net)	0.302 in ⁴
Net radius of gyration (Ry net)	0.606 in
Allowable Capacities (Fully Braced)	
Local Moment at Full Section (Mal-full)	67.47 in-kips
Distortional Moment at Full Section (Mad-full)	67.47 in-kips
Local Moment at Knockout (Mal-kno)	66.45 in-kips
Distortional Moment at Knockout (Mad-kno)	65.21 in-kips
Shear at Knockout (Va-kno)	2413 lbs
Shear at Full Section (Va-full)	10888 lbs
Torsional Section Properties	
Distance between centroid and shear-center (Xo)	-1.075 in
Distance between centroid and web-centerline (X)	0.384 in
St. Venant torsional constant (J*1000)	3.942 in ⁴
Torsional warping constant (Cw)	4.498 in ⁶
Radii of gyration (Ro)	2.943 in
Torsional flexural constant (Beta)	0.867
Unbraced Length (Lu)	35.7 in
Effective Section Properties	
Moment of inertia (Ixe)	8.181 in ⁴
Section modulus (Sxe)	2.254 in ³



Code Approvals & Performance Standards

- [AISI S100-16 \(2020\) w/S2-20](#) North American Specification for the Design of Cold-Formed Steel Structural Members
 - Direct Strength Method (DSM) utilized for calculating flexural strength
- [AISI S240-15](#) North American Standard for Cold-Formed Steel Structural Framing
 - Section A3 Material - Chemical & mechanical requirements (Referencing ASTM A1003/A1003M)
 - Section A4 Corrosion Protection (Referencing ASTM A653/A653M)
 - Section A5 Products - Thickness, shapes, tolerances, identification
- [SDS For ASTM A1003 Steel Framing Products](#) For Interior Framing, Exterior Framing and Clips/Accessories