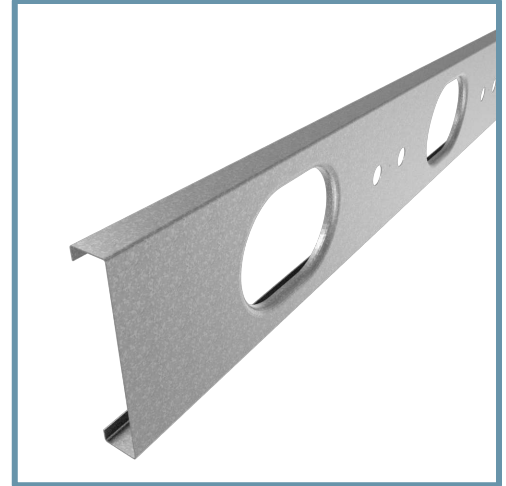


8" TradeReady® Floor Joist (800TDJ24-175-97)

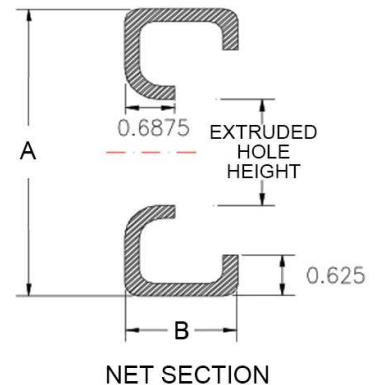
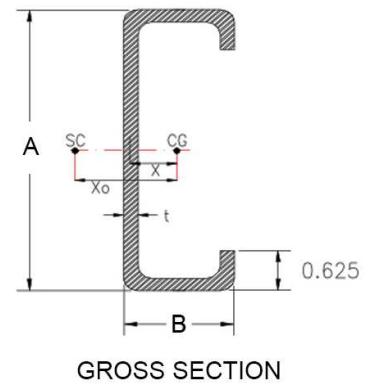
Floor Joist with extruded holes

Geometric Properties

Web depth (A): 8.00 in	Extruded hole shape: Ellipse	Design thickness: 0.1017 in
Flange width (B): 1.75 in	Extruded hole Height: 4.25"	Min. steel thickness: 0.0966 in
Extruded hole spacing: 24 in	Extruded hole width: 7"	Yield stress, Fy: 50 ksi
Coating: CP60		



Gross Section Properties of Full Section	
Cross sectional area	1.219 in ²
Member weight per foot of length	4.007 lbs/ft
Moment of inertia (Ix)	10.396 in ⁴
Radius of gyration (Rx)	2.920 in
Gross moment of inertia (Iy)	0.411 in ⁴
Gross radius of gyration (Ry)	0.581 in
Net Section Properties (at Extruded Hole)	
Cross sectional area (A net)	0.898 in ²
Moment of inertia (Ix net)	10.272 in ⁴
Radius of gyration (Rx net)	3.383 in
Net moment of inertia (Iy net)	0.326 in ⁴
Net radius of gyration (Ry net)	0.603 in
Allowable Capacities (Fully Braced)	
Local Moment at Full Section (Mal-full)	77.82 in-kips
Distortional Moment at Full Section (Mad-full)	77.82 in-kips
Local Moment at Knockout (Mal-kno)	76.88 in-kips
Distortional Moment at Knockout (Mad-kno)	73.14 in-kips
Shear at Knockout (Va-kno)	2947 lbs
Shear at Full Section (Va-full)	10888 lbs
Torsional Section Properties	
Distance between centroid and shear-center (Xo)	-1.025 in
Distance between centroid and web-centerline (X)	0.360 in
St. Venant torsional constant (J*1000)	4.205 in ⁴
Torsional warping constant (Cw)	5.595 in ⁶
Radii of gyration (Ro)	3.150 in
Torsional flexural constant (Beta)	0.894
Unbraced Length (Lu)	35.3 in
Effective Section Properties	
Moment of inertia (Ixe)	10.411 in ⁴
Section modulus (Sxe)	2.599 in ³



Code Approvals & Performance Standards

- [AISI S100-16 \(2020\) w/S2-20](#) North American Specification for the Design of Cold-Formed Steel Structural Members
 - Direct Strength Method (DSM) utilized for calculating flexural strength
- [AISI S240-15](#) North American Standard for Cold-Formed Steel Structural Framing
 - Section A3 Material - Chemical & mechanical requirements (Referencing ASTM A1003/A1003M)
 - Section A4 Corrosion Protection (Referencing ASTM A653/A653M)
 - Section A5 Products - Thickness, shapes, tolerances, identification
- [SDS For ASTM A1003 Steel Framing Products](#) For Interior Framing, Exterior Framing and Clips/Accessories