

## 3/4" Bullnose 2-Way Inside Corner Cap

### Corner and Transition Caps

3/4" Bullnose 2-way 3/4" Inside Corner Caps provide the ideal component to transition bullnose corner beads to a crisp finish where inside corners intersect at 90°. Examples of applications include windows, closets, doorways, skylights, etc. Easy to install, this component provides a cost-effective alternative to time-consuming mitering of corners.

### Product Data & Ordering Information:

**Material:** PVC (Polyvinyl Chloride)

**Dimensions:** 3/4" Radius

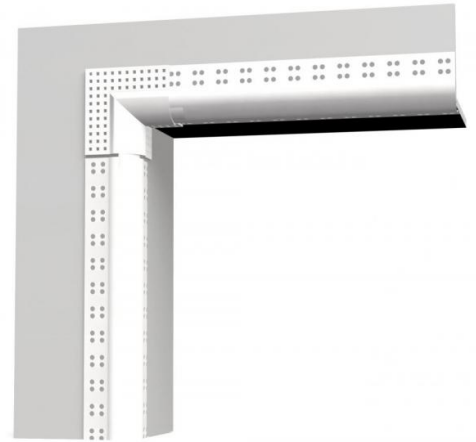
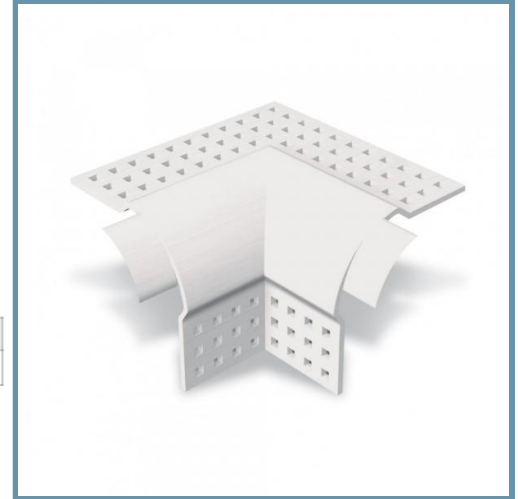
Product code	Radius	Style	Pcs./Ctn.
M285	3/4"	2-Way Corner Cap	50

### Code Approvals & Performance Standards

- [ASTM C840](#) Standard Specification for Application and Finishing of Gypsum Board
- [ASTM C841](#) Standard Specification for Installation of Interior Lathing and Furring
- [ASTM C1047](#) Standard Specification for Accessories for Gypsum Wallboard and Gypsum Veneer Base
- [ASTM D3678](#) Standard Specification for Rigid Poly(Vinyl Chloride) (PVC) Interior - Profile Extrusions
- [SDS Vinyl Corp](#) PVC Compounds

### Storage:

All stored materials shall be kept dry. Materials shall be stacked off the ground, supported on a level platform, and protected from the weather.



- Rust proof and dent resistant
- Eliminates costly mitering of corners
- Easy to install