

3/4" Bullnose Transition Cap (M859)

Vinyl Transition Caps

Bullnose to 90° transition caps simplify installation of baseboard or crown molding corners into 3/4" bullnose systems. Quick and easy to install, this product eliminates corner gaps and the need for time-consuming caulking and filling. Can be used with metal, vinyl or paper-faced 3/4" bullnose corner bead for transition onto baseboard or crown molding up to 4-1/2" in width.

Product Data & Ordering Information:

Material: PVC (Polyvinyl Chloride)

Dimensions: 3/4" Radius

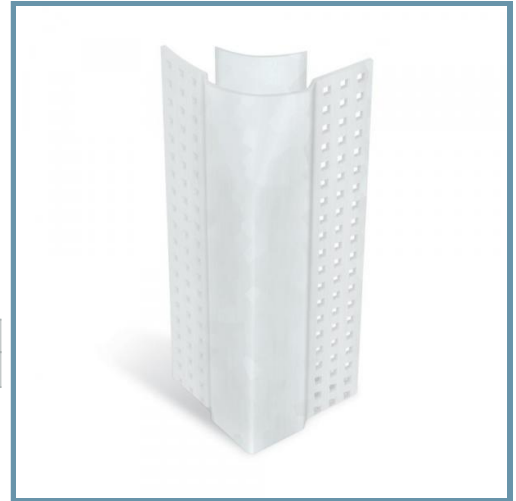
Product code	Radius	Style	Pcs./Ctn.
M859	3/4"	Bullnose to 90	50

Code Approvals & Performance Standards

- [ASTM C840](#) Standard Specification for Application and Finishing of Gypsum Board
- [ASTM C841](#) Standard Specification for Installation of Interior Lathing and Furring
- [ASTM C1047](#) Standard Specification for Accessories for Gypsum Wallboard and Gypsum Veneer Base
- [ASTM D3678](#) Standard Specification for Rigid Poly(Vinyl Chloride) (PVC) Interior - Profile Extrusions
- [SDS Vinyl Corp](#) PVC Compounds

Storage:

All stored materials shall be kept dry. Materials shall be stacked off the ground, supported on a level platform, and protected from the weather.



- Rust proof and dent resistant
- Eliminates need for time-consuming caulking and filling
- For use with metal, vinyl or paper-faced corner beads

