

Wide Expansion Joints (Slip Joint) 1/2" Reveal

Designed to relieve stress in wall and ceiling areas

Used where excessive horizontal and vertical movements might occur. Includes an additional design feature of a 1/2" reveal.

Applications: Stucco

Product Data & Ordering Information:

Product code	Ground	Pcs./Box
5038-50	3/8"	18
5050-50	1/2"	18
5058-50	5/8"	18
5075-50	3/4"	18
5078-50	7/8"	15
50100-50	1"	15

Notes: 1/2" reveal (adj. 1/4" to 5/8"), 6" to 6-3/8" overall width, perforated flanges.
 Reveal also available in 1" and 1-1/2" widths.
 Colors available: Standard color White or Tan, Brown, Gray and Black. Call for pricing.

ASTM & Code Standards

Product Specifications

- ASTM D638 - Standard Test Method for Tensile Properties of Plastics
- ASTM D790 - Standard Test Methods for Flexural Properties of Unreinforced and Reinforced Plastics and Electrical Insulating Materials
- ASTM D256 - Standard test Methods for Determining the Izod Pendulum Impact Resistance of Plastics
- ASTM D648 - Standard Test Method for Deflection Temperature of Plastics Under Flexural Load in the Edgewise Position
- ASTM D696 - Standard Test Method for Coefficient of Linear Thermal Expansion of Plastics Between Negative 30 Degrees Celsius and 30 Degrees Celsius with a Vitreous Silica Dilatometer
- ASTM D1784 - Standard Classification System and Basis for Specification for Rigid Poly Vinyl Chloride (PVC) Compounds and Chlorinated Poly Vinyl Chloride (CPVC) Compounds
- ASTM D4216 Cell Class 13244C - Standard Specification for Rigid Poly Vinyl Chloride (PVC) and Related PVC and Chlorinated Poly Vinyl Chloride (CPVC) Building Products Compounds

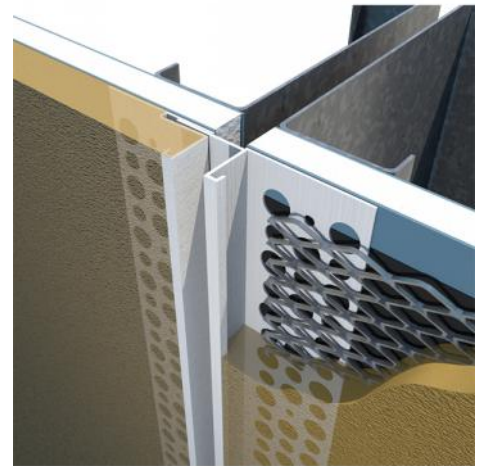
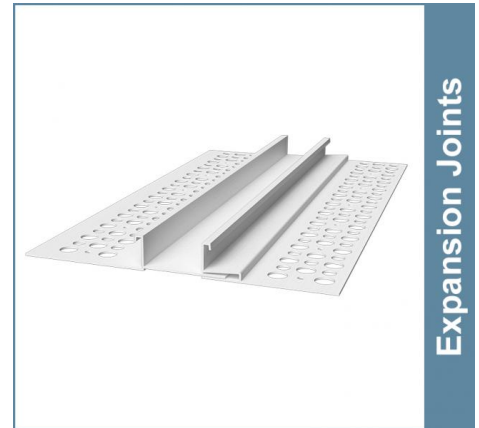
Installation Standards

- ASTM C1861 - Standard Specification for Lathing and Furring Accessories, and Fasteners, for Interior and Exterior Portland Cement-Based Plaster
- ASTM C1063 - Standard Specification for Installation of Lathing and Furring to Receive Interior and Exterior Portland Cement-Based Plaster. Table, 1, PVC for Exterior.
- ASTM C1780 - Standard Practice for Installation Methods for Cement-Based Adhered Masonry Veneer
- ASTM C841 - Standard Specification for Installation of Interior Lathing and Furring
- SDS & Product Certification Information is available at www.clarkdietrich.com/SupportDocs

Storage

All stored materials shall be kept dry. Materials shall be stacked off the ground, supported on a level platform, and protected from the weather.

09.22.00 (Supports for Plaster)



Project Information

Name:
Address:

Contractor Information

Name:
Contact:
Phone:
Fax:

Architect Information

Name:
Contact:
Phone:
Fax: