

## EIFS/DEFS Bullnose Corner Bead

**Designed for use in EIFS and DEFS wall and ceiling systems**

These corner beads are hard to damage, rust-proof, and straight, with a soft, rounded aesthetic. Large perforations allow the base coat mixture to easily flow through and bond to the substrate for better embedment. When joining continuous runs of corner bead the preferred method of alignment is to miter the flanges. When creating corner bead intersections, such as for exterior soffit corners, miter all flanges to prevent overlapping, which will cause poor bonding and alignment.

### Product Data & Ordering Information:

Product code	Finish Thickness	Insulation Thickness	Radius	Flanges	Length	Pcs./Ctn
BCB100E	1/16"	All	3/4"	1-3/8"	8' or 10'	50
BCB100E-A	1/16"	All	3/4"	1-3/8"	8' or 10'	50

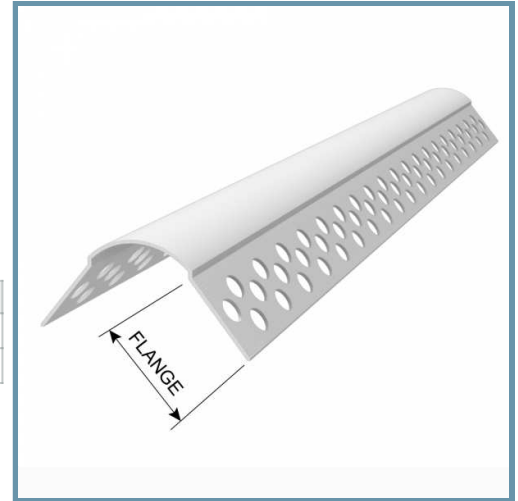
Note: BCB100E-A is for arch applications

### Code Approvals & Performance Standards

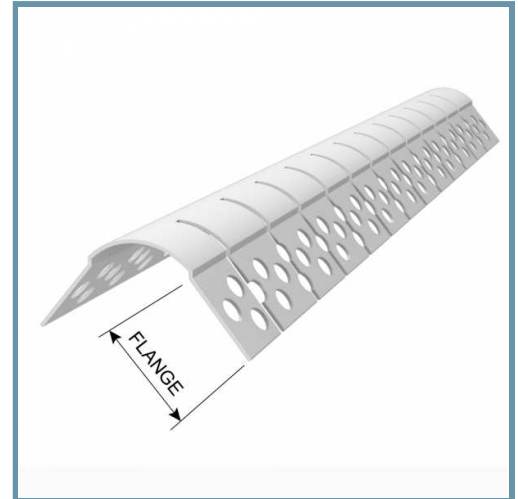
- [ASTM D1784](#) Standard Classification System and Basis for Specification for Rigid Poly(Vinyl Chloride) (PVC) Compounds and Chlorinated Poly(Vinyl Chloride) (CPVC) Compounds
- [ASTM D4216](#) Standard Specification for Rigid Poly(Vinyl Chloride) (PVC) and Related PVC and Chlorinated Poly(Vinyl Chloride) (CPVC) Building Products Compounds
- [ASTM E2110](#) Standard Terminology for Exterior Insulation and Finish Systems (EIFS)
- [ASTM E2273](#) Standard Test Method for Determining the Drainage Efficiency of Exterior Insulation and Finish Systems (EIFS) Clad Wall Assemblies
- [ASTM E2486](#) Standard Test Method for Impact Resistance of Class PB and PI Exterior Insulation and Finish Systems (EIFS)
- [ASTM E2511](#) Standard Guide for Detailing of EIFS-Clad Barrier and Drainage Wall Assemblies
- [ASTM E2568](#) Standard Specification for PB Exterior Insulation and Finish Systems
- [SDS Vinyl Corp](#) PVC Compounds

### Storage

All stored materials shall be kept dry. Materials shall be stacked off the ground, supported on a level platform, and protected from the weather.



**BCB100E**



**BCB100E-A**

