

## BackerBead® Drip Flashing - 3-1/2" Flange

### PVC Drip Flange with Built-in Closed Cell Backer Rod

Designed to provide positive drainage above exterior window and door openings while also providing a caulk tray at the top of window and door frames for the proper seal and added moisture protection.

ClarkDietrich BackerBead® eliminates the need to install a backer rod separately, as the product features a factory-applied backer rod that is affixed to the vinyl drip flashing and set to the exact height and depth. This allows the installer to create a "gap" on the wall without the hassle of aligning it in the field, thereby saving time and materials. Drip Flange accessory is applied above window/door conditions or any wall transition that would be caulked below the drip.

**Applications: Stucco, Stone Veneer**

#### Product Data & Ordering Information:

Product code	Ground	Flange	Drip Leg	Pcs./Box
DFL50-25B	1/2"	3-1/2"	1/4"	35
DFL58-25B	5/8"	3-1/2"	1/4"	35
DFL75-25B	3/4"	3-1/2"	1/4"	35
DFL78-25B	7/8"	3-1/2"	1/4"	35
DFL100-25BB	1"	3-1/2"	1/4"	35
DFL125-25BB	1-1/4"	3-1/2"	1/4"	35
DFL150-25BB	1-1/2"	3-1/2"	1/4"	35
DFL200-25BB	2"	3-1/2"	1/4"	35
DFL300-25BB	3"	3-1/2"	1/4"	25
DFL400-25BB	4"	3-1/2"	1/4"	25

White backer rod optional (for clear sealant). Add -WH to product code, example 6658BBSF-WH. Vinyl Colors available: Standard color White or Tan, Brown, Gray and Black. Call for pricing. BackerBead also available with a solid flange upon request. Add U to product code, example: 6658BBSFU.

#### ASTM & Code Standards

##### Product Specifications

- ASTM D638, ASTM D790, ASTM D256, ASTM D648, ASTM D696
- ASTM D1784 - Standard Classification System and Basis for Specification for Rigid Poly Vinyl Chloride (PVC) Compounds and Chlorinated Poly Vinyl Chloride (CPVC) Compounds
- ASTM D4216 Cell Class 13244C - Standard Specification for Rigid Poly Vinyl Chloride (PVC) and Related PVC and Chlorinated Poly Vinyl Chloride (CPVC) Building Products Compounds

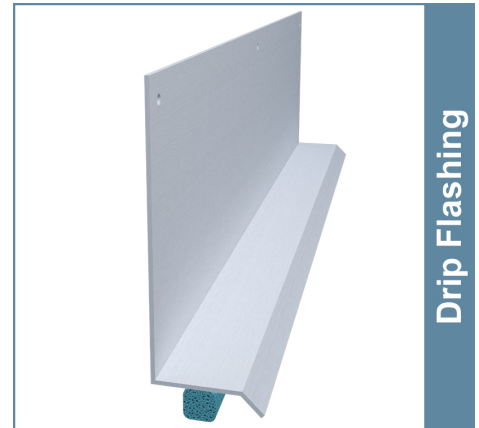
##### Installation Standards

- ASTM C1330 - Standard Specification for Cylindrical Sealant Backing for Use with Cold Liquid-Applied Sealants
- ASTM E331 - Standard Test Method for Water Penetration of Exterior Windows, Skylights, Doors, and Curtain Walls by Uniform Static Air Pressure Difference
- ASTM C1861 - Standard Specification for Lathing and Furring Accessories, and Fasteners, for Interior and Exterior Portland Cement-Based Plaster
- ASTM C1063 - Standard Specification for Installation of Lathing and Furring to Receive Interior and Exterior Portland Cement-Based Plaster. Table, 1, PVC for Exterior.
- ASTM C1780 - Standard Practice for Installation Methods for Cement-Based Adhered Masonry Veneer
- ASTM C841 - Standard Specification for Installation of Interior Lathing and Furring
- SDS & Product Certification Information is available at [www.clarkdietrich.com/SupportDocs](http://www.clarkdietrich.com/SupportDocs)

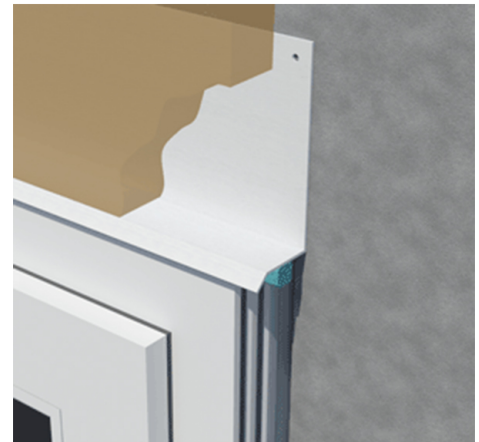
#### Storage

All stored materials shall be kept dry. Materials shall be stacked off the ground, supported on a level platform, and protected from the weather.

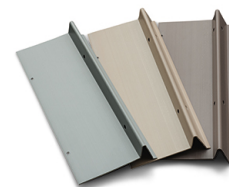
#### 09.22.00 (Supports for Plaster)



Drip Flashing



#### PVC Color Options



\*Standard is white.

#### Project Information

Name:  
Address:

#### Contractor Information

Name:  
Contact:  
Phone:  
Fax:

#### Architect Information

Name:  
Contact:  
Phone:  
Fax: