

CI Weep Track

Directs water drainage

Designed to be used with #1 Corner Bead around windows and doors and at the foundation line to direct water drainage. Continuously insulated (CI) stucco assemblies with CI Weep Track have achieved the requirements of NFPA 285.

Applications: EIFS or Stucco

Product Data & Ordering Information:

Product code	Insul Thickness	Back Flange (A)	Weep Trough (B)	Perforated Flange (C)	Pcs./Box
CIWT-350	1" to 3"	3-1/2"	3/8"	1-1/4"	30

Colors available: Standard color White or Tan, Brown, Gray and Black. Call for pricing.

ASTM & Code Standards

Product Specifications

- ASTM D638 - Standard Test Method for Tensile Properties of Plastics
- ASTM D790 - Standard Test Methods for Flexural Properties of Unreinforced and Reinforced Plastics and Electrical Insulating Materials
- ASTM D256 - Standard test Methods for Determining the Izod Pendulum Impact Resistance of Plastics
- ASTM D648 - Standard Test Method for Deflection Temperature of Plastics Under Flexural Load in the Edgewise Position
- ASTM D696 - Standard Test Method for Coefficient of Linear Thermal Expansion of Plastics Between Negative 30 Degrees Celsius and 30 Degrees Celsius with a Vitreous Silica Dilatometer
- ASTM E2568 - Standard Specification fo PB Exterior Insulation and Finish
- ASTM D1784 - Standard Classification System and Basis for Specification for Rigid Poly Vinyl Chloride (PVC) Compounds and Chlorinated Poly Vinyl Chloride (CPVC) Compounds
- ASTM D4216 Cell Class 13244C - Standard Specification for Rigid Poly Vinyl Chloride (PVC) and Related PVC and Chlorinated Poly Vinyl Chloride (CPVC) Building Products Compounds

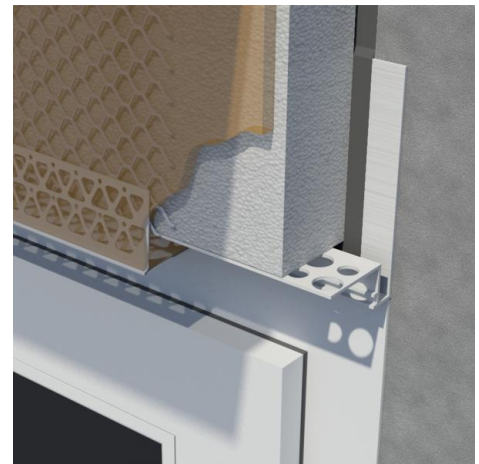
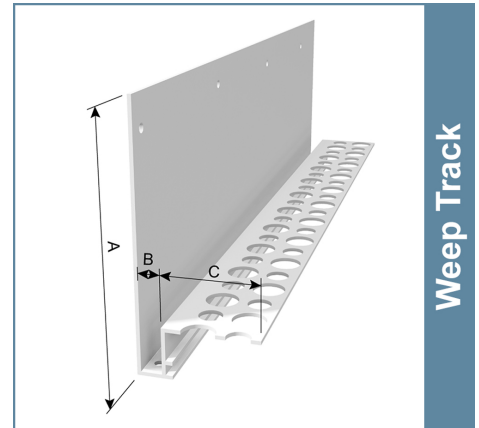
Installation Standards

- ASTM E2110 - Standard Terminology for Exterior Insulation and Finish Systems (EIFS)
- ASTM E2486 - Standard Test Method for Impact Resistance of Class PB and PI Exterior Insulation and Finish Systems (EIFS)
- ASTM E2511 - Standard Guide for Detailing of EIFS-Clad Barrier and Drainage Wall Assemblies
- ASTM C1861 - Standard Specification for Lathing and Furring Accessories, and Fasteners, for Interior and Exterior Portland Cement-Based Plaster
- ASTM C1063 - Standard Specification for Installation of Lathing and Furring to Receive Interior and Exterior Portland Cement-Based Plaster. Table, 1, PVC for Exterior.
- ASTM C1780 - Standard Practice for Installation Methods for Cement-Based Adhered Masonry Veneer
- ASTM C841 - Standard Specification for Installation of Interior Lathing and Furring
- SDS & Product Certification Information is available at www.clarkdietrich.com/SupportDocs

Storage

All stored materials shall be kept dry. Materials shall be stacked off the ground, supported on a level platform, and protected from the weather.

07.24.00 (Exterior Insulation & Finish Systems)



Project Information

Name:
Address:

Contractor Information

Name:
Contact:
Phone:
Fax:

Architect Information

Name:
Contact:
Phone:
Fax: