

## Vented Drip Screed

**Designed to address finishing the plaster to the vertical soffit area intersection**

Used when a drip and soffit vent need to be combined. Vent clips are provided to connect vented drip screed and assist in alignment.

### Product Data & Ordering Information:

Product code	Ground	Vent Width	Flange	Vent Area per LF	Pcs./Box
DCS50-200V	1/2"	2"	1-3/4"	8 sq. in.	14
DCS75-200V	3/4"	2"	1-3/4"	8 sq. in.	14
DCS78-200V	7/8"	2"	1-3/4"	8 sq. in.	14
DCS100-200V	1"	2"	1-3/4"	8 sq. in.	14

Note: Dissimilar grounds may be specified.

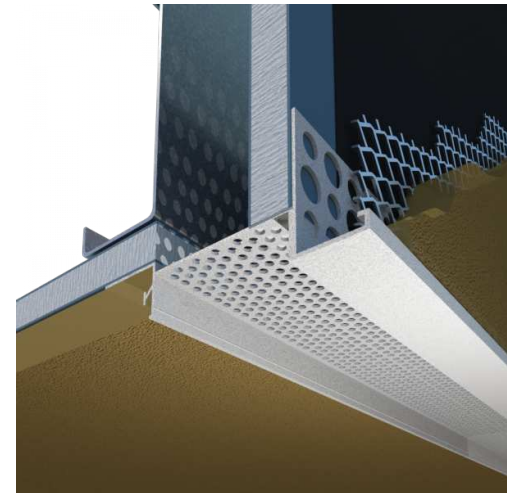
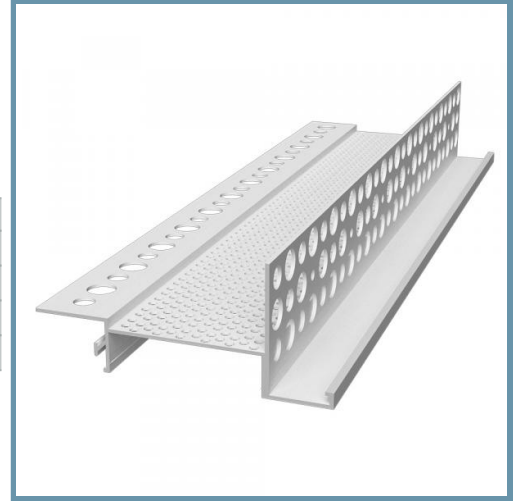
Colors available: Standard color White or Tan, Brown, Gray and Black. Call for pricing.

### Code Approvals & Performance Standards

- [ASTM C926](#) Standard Specification for Application of Portland Cement - Based Plaster
- [ASTM C1063](#) Standard Specification for Installation of Lathing and Furring to Receive Interior and Exterior Portland Cement-Based Plaster
- [ASTM C1861](#) Standard Specification for Lathing and Furring Accessories, and Fasteners, for Interior and Exterior Portland Cement-Based Plaster
- [ASTM D1784](#) Standard Classification System and Basis for Specification for Rigid Poly(Vinyl Chloride) (PVC) Compounds and Chlorinated Poly(Vinyl Chloride) (CPVC) Compounds
- [ASTM D4216](#) Standard Specification for Rigid Poly(Vinyl Chloride) (PVC) and Related PVC and Chlorinated Poly(Vinyl Chloride) (CPVC) Building Products Compounds
- [SDS Vinyl Corp](#) PVC Compounds

### Storage

All stored materials shall be kept dry. Materials shall be stacked off the ground, supported on a level platform, and protected from the weather.



- Available in 2", 3", 4" and 6" vent widths