

Soffit Vents (Three-Piece with Edge Clip)

Continuous three-piece soffit vent for stucco

Vertical edge clips are provided for special installations. Vent clips are provided to connect the soffit vent and to assist in alignment. Three-piece with a clip, a perforated flange, and a 1-1/4" vertical flange.

Product Data & Ordering Information:

Product Code	Ground	Vent	Overall	Vent Area	PCS/Box
		Width	Width	Per LF	
SV38-200F	3/8"	2"	5"	8 sq. in.	15
SV50-200F	1/2"	2"	5"	8 sq. in.	10
SV58-200F	5/8"	2"	5"	8 sq. in.	10
SV75-200F	3/4"	2"	5"	8 sq. in.	9
SV78-200F	7/8"	2"	5"	8 sq. in.	9
SV100-200F	1"	2"	5"	8 sq. in.	9

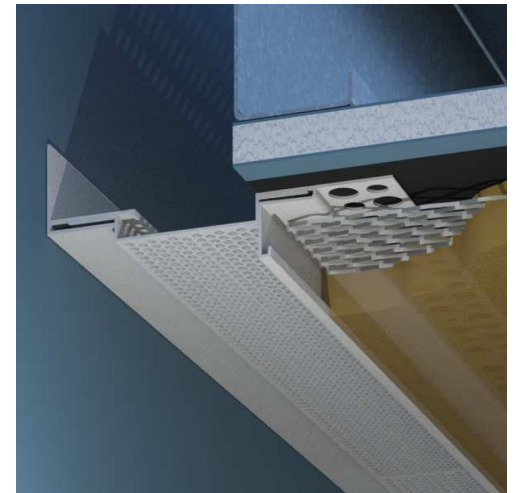
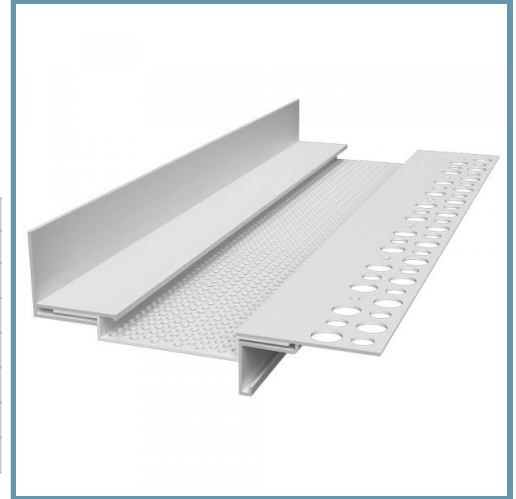
Colors available: Standard color White or Tan, Brown, Gray and Black. Call for pricing.

Code Approvals & Performance Standards

- [ASTM C1063](#) Standard Specification for Installation of Lathing and Furring to Receive Interior and Exterior Portland Cement-Based Plaster
- [ASTM C1861](#) Standard Specification for Lathing and Furring Accessories, and Fasteners, for Interior and Exterior Portland Cement-Based Plaster
- [ASTM D1784](#) Standard Classification System and Basis for Specification for Rigid Poly(Vinyl Chloride) (PVC) Compounds and Chlorinated Poly(Vinyl Chloride) (CPVC) Compounds
- [ASTM D4216](#) Standard Specification for Rigid Poly(Vinyl Chloride) (PVC) and Related PVC and Chlorinated Poly(Vinyl Chloride) (CPVC) Building Products Compounds
- [SDS Vinyl Corp](#) PVC Compounds

Storage

All stored materials shall be kept dry. Materials shall be stacked off the ground, supported on a level platform, and protected from the weather.



- Available in 1", 1-1/2", 2", 3", 4" and 6" vent widths