

## Miscellaneous Soffit Vent

**One-piece soffit vent designed for plywood, soffit board, and three-coat stucco and plaster**

May be combined with various Starter Strips / Casing Beads to create a three-piece system for EIFS, DEFS, stucco or plaster to provide an economical means for venting soffit areas. Vent clips are provided for proper connection and to assist in the alignment of soffit vents. Caulk all intersections, butt joints, ends, and corners at the time of installation.

The one-piece soffit vent can be combined with [VF Clip](#), [F40](#) or [F50](#)

### Product Data & Ordering Information:

Product Code	Vent Width (A)	Board Thickness	Overall Width (B)	Vent Area Per LF	PCS/Box
V-100	1"	3/8"	2-3/8"	4 sq. in.	40
V-150	1-1/2"	3/8"	2-7/8"	6 sq. in.	40
V-200	2"	3/8"	3-3/8"	8 sq. in.	40
V-300	3"	3/8"	4-3/8"	15 sq. in.	40
V-400	4"	3/8"	5-3/8"	16 sq. in.	25
V-600	6"	3/8"	7-3/8"	18 sq. in.	20

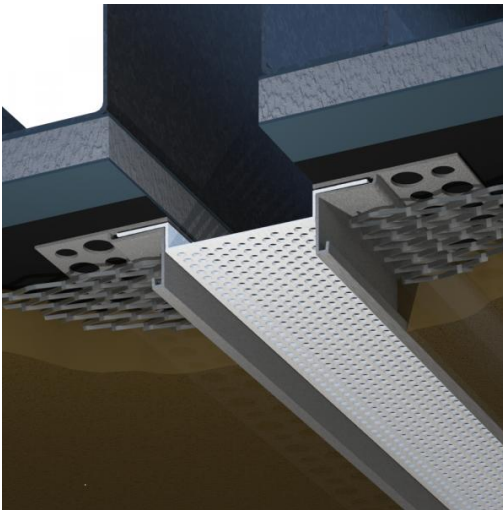
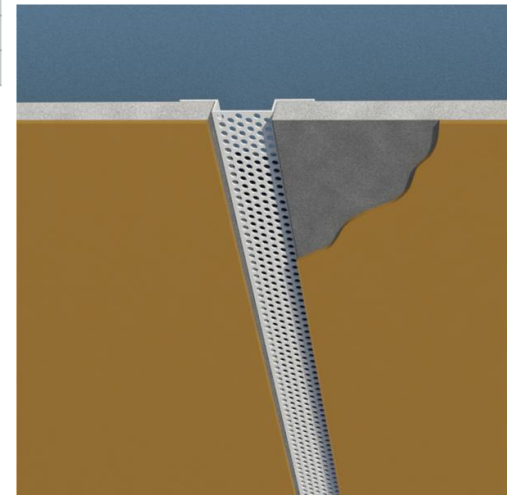
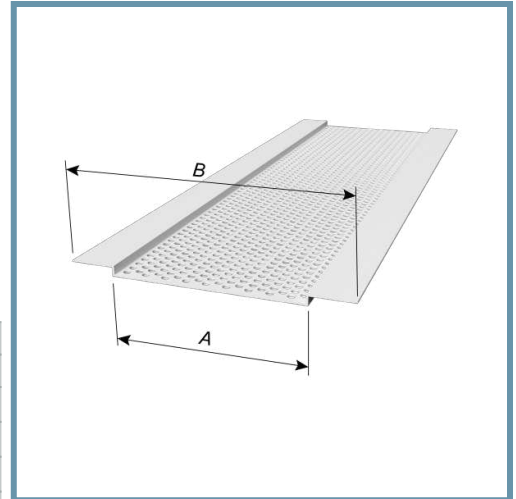
Colors available: Standard color White or Tan, Brown, Gray and Black. Call for pricing.

### Code Approvals & Performance Standards

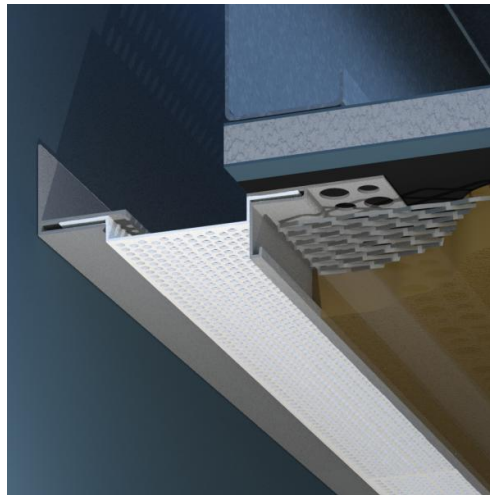
- [ASTM C926](#) Standard Specification for Application of Portland Cement - Based Plaster
- [ASTM C1063](#) Standard Specification for Installation of Lathing and Furring to Receive Interior and Exterior Portland Cement-Based Plaster
- [ASTM C1861](#) Standard Specification for Lathing and Furring Accessories, and Fasteners, for Interior and Exterior Portland Cement-Based Plaster
- [ASTM D1784](#) Standard Classification System and Basis for Specification for Rigid Poly(Vinyl Chloride) (PVC) Compounds and Chlorinated Poly(Vinyl Chloride) (CPVC) Compounds
- [ASTM D4216](#) Standard Specification for Rigid Poly(Vinyl Chloride) (PVC) and Related PVC and Chlorinated Poly(Vinyl Chloride) (CPVC) Building Products Compounds
- [SDS Vinyl Corp](#) PVC Compounds

### Storage

All stored materials shall be kept dry. Materials shall be stacked off the ground, supported on a level platform, and protected from the weather.



Combined with F40 / F40



Combined with VF Clip / F40