

Structa VTRUSS Straight Corner

Welded wire corner lath for straight corner applications

Structa VTRUSS Straight Corner is welded wire lath corner for 1 or 3 coat stucco applications. VTRUSS Straight Corner is engineered to provide superior reinforcement. The unique truss design ensures a consistent "true" - straight corner with fewer sharp ends for ease of handling. The abundant nailing opportunities and twin tracs create an ease of attachment and the increased rigidity promote precise corner plaster work.

Product Data & Ordering Information:

Material: Class 1 galvanized (per ASTM A641)
(also available in stainless steel)

Legs: 2-1/2"

Length: 10'-0"

Product Code	Pieces/Carton	Cartons/Pallet
Structa VTRUSS Straight Corner (10VT)	40	50

Code Approvals & Performance Standards

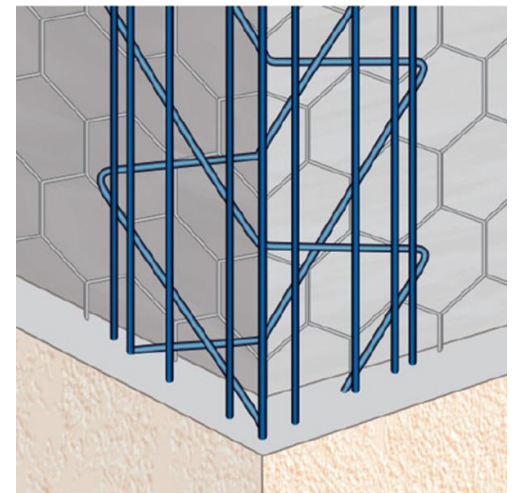
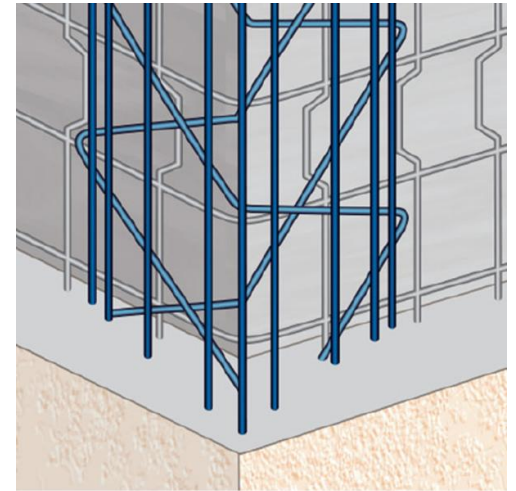
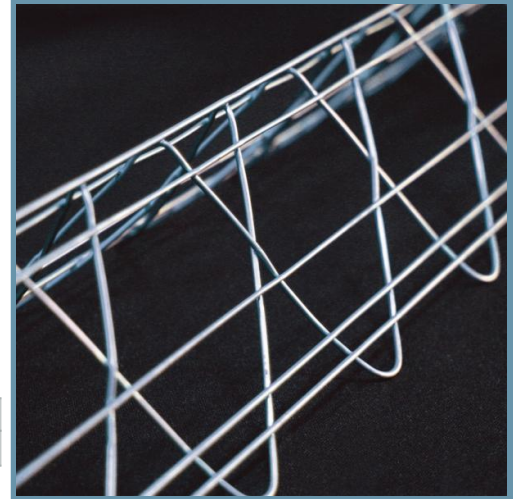
- [ASTM A641](#) Standard Specification for Zinc-Coated (Galvanized) Carbon Steel Wire
- [ASTM C933](#) Standard Specification for Welded Wire Lath
- [ASTM C1063](#) Standard Specification for Installation of Lathing and Furring to Receive Interior and Exterior Portland Cement-Based Plaster
- [ASTM C1861](#) Standard Specification for Lathing and Furring Accessories, and Fasteners, for Interior and Exterior Portland Cement-Based Plaster
- [IAPMO ER-2017](#) Metal Lath
- [SDS StructaWire](#) for StructaWire products

Storage:

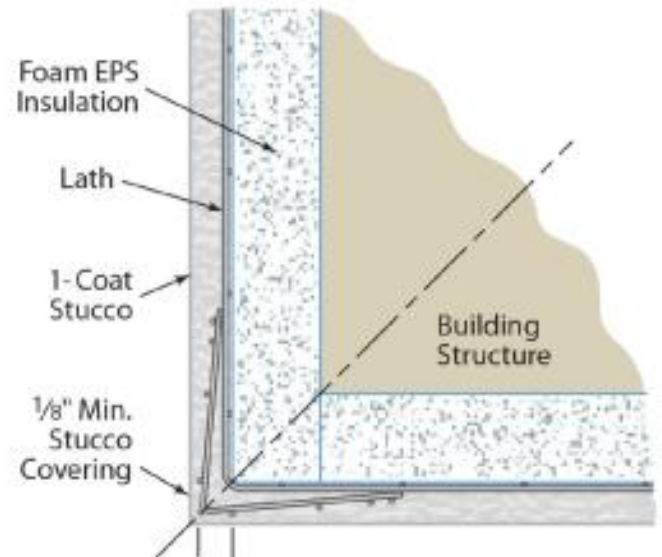
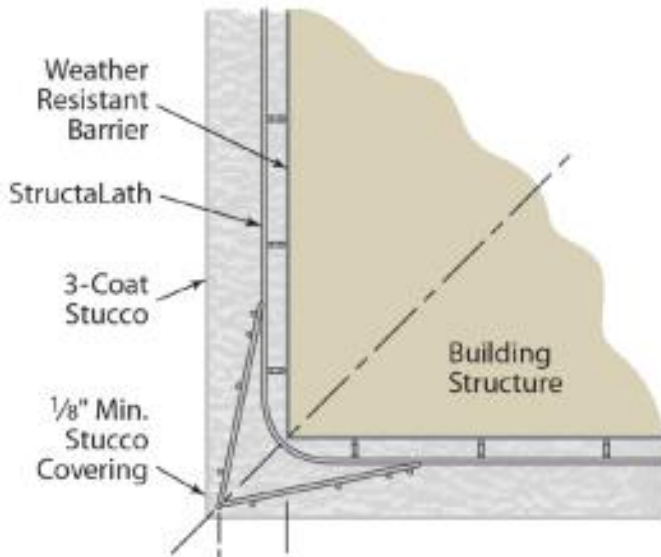
All stored materials shall be kept dry. Materials shall be stacked off the ground, supported on a level platform, and protected from the weather and surface contamination per ASTM C933 & C1063.

Limitations:

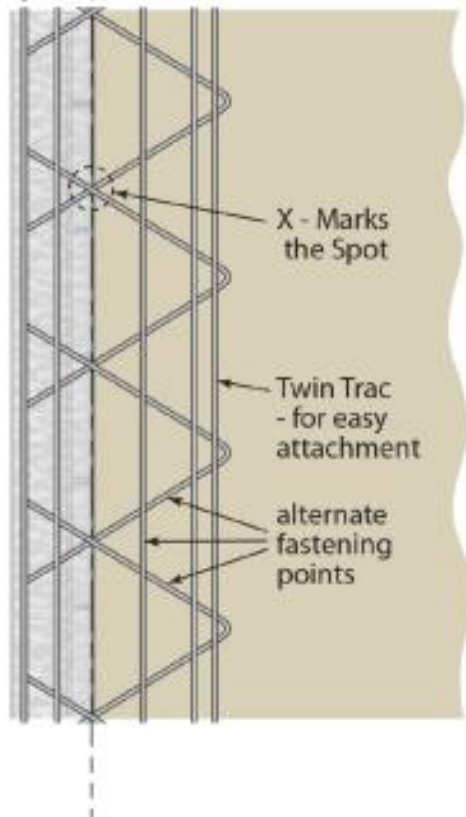
Galvanized steel products should not be used with magnesium oxychloride cement stucco or Portland cement stucco containing calcium chloride additives.



Structa VTRUSS Straight Corner



Sighting 3-Coat Straight Corner Lath



Sighting 1-Coat Straight Corner Lath

