

## Drywall Z-Furring Channel

2" depth x 18mils (25 gauge)

Z-Furring channels are an ideal product for furring out the interior walls on an existing masonry or new concrete / masonry walls. It is especially useful when insulation is required on the interior side of a masonry wall. The sort leg is attached to masonry and sheathing is attached to the long leg.

### Product Data & Ordering Information:

Material: All Material: Grade 33ksi min. yield strength  
18mils (25ga), 0.0188" Design Thickness, 0.0179" Min. Thickness

Coating: G40EQ (G40 or G60 available)

Dimensions: 3/4" leg x 1-1/4" leg x 2" deep

Stock Lengths: 10'-0" long

Packaging: (10) pieces per bundle - (280) pieces per pallet

Packaging weight: 25 lbs/bundle or 245 lbs/1000ft

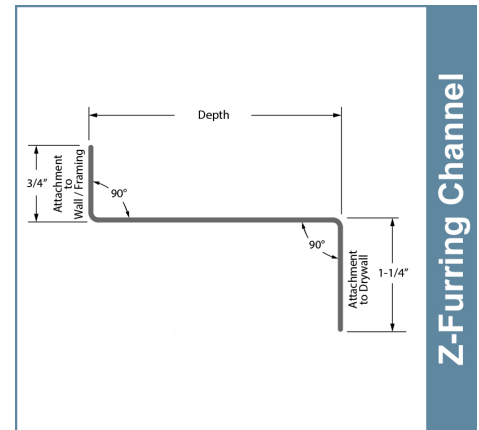
### ASTM & Code Standards:

- AISI North American Specification [NASPEC] 2001 Supplement
- Furring channel is produced to meet or exceed ASTM C645
- Galvanized sheet steel meets or exceeds requirements of ASTM A924 & A1003
- For installation & storage information refer to ASTM C754
- SDS & Product Certification Information available at [www.clarkdietrich.com/SupportDocs](http://www.clarkdietrich.com/SupportDocs)

### Related Accessories:

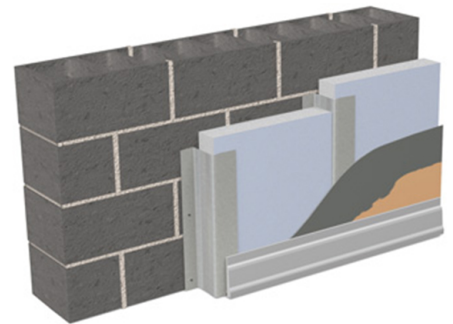
- Other profile depths available: 1", 1-1/2", 2", 2-1/2" and 3"
- 7/8" and 1-1/2" Furring / Hat Channel
- Single and Double Leg Resilient Channel

### 09.22.16 (Non-Structural Metal Framing)



Z-Furring Channel

- Furring for masonry walls
- Allows for rigid insulation



### Sustainability Credits:

For more details and LEED letters contact Technical Services at 888-437-3244 or visit [www.clarkdietrich.com/LEED](http://www.clarkdietrich.com/LEED)

**LEED v4 MR Credit** -- Building Product Disclosure and Optimization: EPD (1 point) - Sourcing of Raw Materials (1 point) - Material Ingredients (1 point) - Construction and Demolition Waste Management (up to 2 points) - Innovation Credit (up to 2 points).

**LEED 2009 Credit MR 2 & MR 4** -- ClarkDietrich's steel products are 100% recyclable and have a national average recycled content of 34.2% (19.8% post-consumer and 14.4% pre-consumer). If seeking a higher number to meet Credit MR 5, please contact us at ([info@clarkdietrich.com](mailto:info@clarkdietrich.com) / 888-437-3244)

#### Project Information

Name:  
Address:

#### Contractor Information

Name:  
Contact:  
Phone:  
Fax:

#### Architect Information

Name:  
Contact:  
Phone:  
Fax: