

Drywall Z-Furring Channel

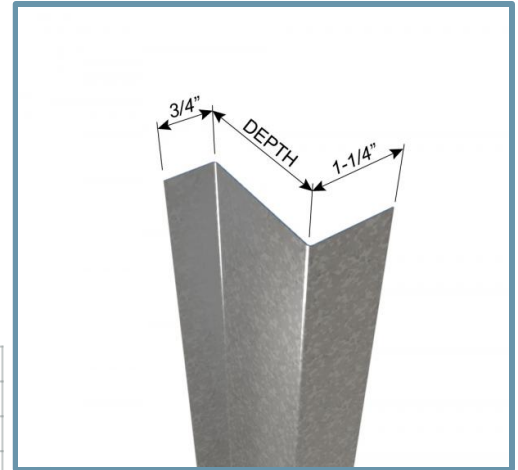
3" depth x 33mils (20ga STR)

Z-Furring channels are an ideal product for furring out the interior walls on an existing masonry or new concrete / masonry walls. It is especially useful when insulation is required on the interior side of a masonry wall. The short leg is attached to masonry and sheathing is attached to the long leg.

The performance and installation of the Z-Furring Channel is the sole responsibility of the design professional and engineer of record. Any customer ordering Z-Furring Channel shall indemnify, defend and hold harmless ClarkDietrich or ClarkDietrich Engineering Services for any loss or damage arising in whole or in part.

Product Data & Ordering Information:

Material:	Grade 33ksi min. yield strength
	33mils (20ga STR), 0.0346" Design Thickness, 0.0329" Min. Thickness
Coating:	CP60 (G90 Available)
Dimensions:	Leg 1 = 3/4", Leg 2 = 1-1/4", Depth = 3"
Stock Lengths:	10'-0" long
Weight per 10' piece:	5.94 lbs



Used in framing applications:

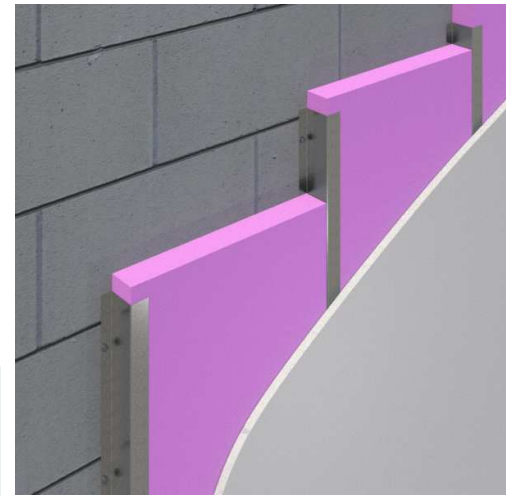
- Furring for masonry walls
- Allows for rigid insulation

Code Approvals & Performance Standards

- **AISI S220-20** North American Standard for Cold-Formed Steel Framing - Nonstructural Members
 - (Compliant to ASTM C645, but IBC replaced with AISI S220 in IBC 2015)
 - Section A3 Material - Chemical & mechanical requirements (Referencing ASTM A1003/A1003M)
 - Section A4 Corrosion Protection (Referencing ASTM A653/A653M)
 - Section C Installation - (Referencing ASTM C754)
- **AISI S240-20** North American Standard for Cold-Formed Steel Structural Framing
 - (Compliant to ASTM C955, but IBC replaced with AISI S200 in IBC 2015, AISI S240 in IBC 2018)
 - Section A3 Material - Chemical & mechanical requirements (Referencing ASTM A1003/A1003M)
 - Section A4 Corrosion Protection (Referencing ASTM A653/A653M)
 - Section C Installation - (Referencing ASTM C1007)
- **SDS For ASTM A1003 Steel Framing Products** For Interior Framing, Exterior Framing and Clips/Accessories

Sustainability Credits For more details and LEED letters contact Technical Services at 888-437-3244 or visit clarkdietrich.com/LEED.

- **LEED v4.1 MR Credit:** Environmental Product Declarations: EPD (1 point) - Sourcing of Raw Materials (up to 2 points) - Material Ingredients (1 point) - Construction and Demolition Waste Management (up to 2 points)
- **LEED v4 MR Credit:** Building Product Disclosure and Optimization: EPD (1 point) - Sourcing of Raw Materials (1 point) - Material Ingredients (1 point) - Construction and Demolition Waste Management (up to 2 points) - Innovation Credit (up to 2 points).



Related Accessories:

- Other profile depths available: 1", 1-1/2", 2", 2-1/2" and 3"
- [Z-Girt for Rainscreen Framing](#)