

## #701A/#801A Zinc J-TRIM

**Provides clean, neat edge protection at gypsum panel terminations for one- and two-coat veneer plaster finishes**

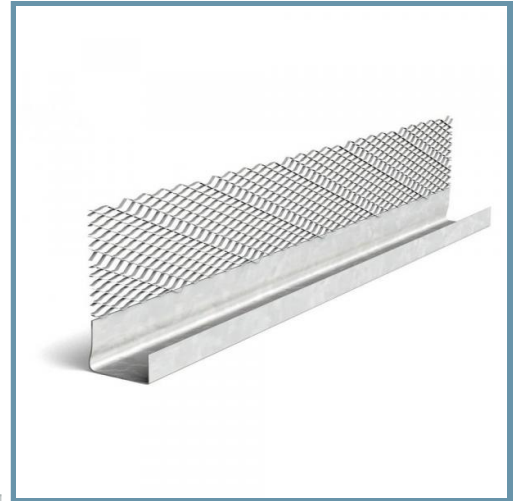
Veneer trims 701A and 801A are J-shaped trims formed from galvanized steel to fit standard 1/2" and 5/8" gypsum panel depths with grounds to accommodate veneer finishes. These trims provide clean, neat edge protection for one- or two-coat veneer plaster finishes at gypsum panel terminations to wall openings and wall or ceiling intersections. 701A provides 3/32" grounds for two-coat veneers and 801A has 1/16" grounds for one-coat veneer plaster.

Zinc veneer trims are the zinc equivalents of 701A and 801A J-Trim with the added benefit of providing ultimate corrosion protection for cement board and exterior applications. These trims provide clean, neat edge protection at wall or ceiling intersections, or wall terminations for one- and two-coat veneer plaster systems.

**Material:** .012" 99.97% pure zinc, compliant with ASTM B-69  
 Also available in G-30 Hot-Dipped Galvanized Steel

### Product Data & Ordering Information:

Product Code	Type	Grounds	Width	Length	Pcs./Ctn.
M71A	701A	3/32"	1/2"	10'	50
M71A	701A	3/32"	5/8"	10'	50
M81A	801A	1/16"	1/2"	10'	50
M81A	801A	1/16"	5/8"	10'	50



- Mini-mesh flanges for keying
- Eliminates shadowing
- Zinc coated for corrosion protection
- Also available in Galvanized

### Code Approvals & Performance Standards

- [ASTM B69](#) Standard Specification for Rolled Zinc
- [ASTM C841](#) Standard Specification for Installation of Interior Lathing and Furring
- [ASTM C1047](#) Standard Specification for Accessories for Gypsum Wallboard and Gypsum Veneer Base
- [ASTM C1063](#) Standard Specification for Installation of Lathing and Furring to Receive Interior and Exterior Portland Cement-Based Plaster
- [SDS Zinc Strip](#) Cold Formed Finished Products

