

## BlazeFrame® (DL 2)

“DL 2” (Deep Leg) Two solid legs w/ fire stop on both sides

Composite Fire Stop/Framing for use in fire rated wall assemblies. Provides joint protection for up to 1” with UL 2079 Class II or III Movement Capabilities. Two solid legs supporting “free floating” studs per listed assemblies in UL Fire Resistance Directory.

A 2mm thickness of cured intumescent material adhered to metal profiles provides air, smoke and sound seals. When exposed to heat above 375 degrees Fahrenheit, the intumescent material expands up to 35 times its size. This provides protection from heat and flame passage during a fire event.

### Product Data & Ordering Information:

Material:

Yield Strength: Grade 33ksi for 30mils, 33mils & 43mils  
Grade 50ksi for 54mils  
Coating: G40 EQ for 30mils, All others = CP60 (G90 available)

30mils: 20 Ga DW, 0.0312” Design Thickness, 0.0296” Min. Thickness  
(30 mils is only available with DL-E 2 and DL 2 Profiles)

33mils: 20 Gauge, 0.0346” Design Thickness, 0.0329” Min. Thickness

43mils: 18 Gauge, 0.0451” Design Thickness, 0.0428” Min. Thickness

54mils: 16 Gauge, 0.0566” Design Thickness, 0.0538” Min. Thickness

Dimensions:

Profile	Leg Length (L)	Tape Width (I)	Joint Protection
DL-E 2	2.00”	0.75”	0.50”
DL 2	2.00”	1.00”	0.75”
DLW 2	2.00”	1.25”	1.00”

Inside width: Equal to the outside width of the stud  
Widths (W): 2-1/2”, 3-5/8”, 4”, 6” and 8”  
Track length: 10’-0”

### ASTM & Code Standards:

- ASTM A1003, C645 & C955
- UL2079, E1966, E119
- SDS & Product Certification Information is available at [www.clarkdietrich.com/SupportDocs](http://www.clarkdietrich.com/SupportDocs).

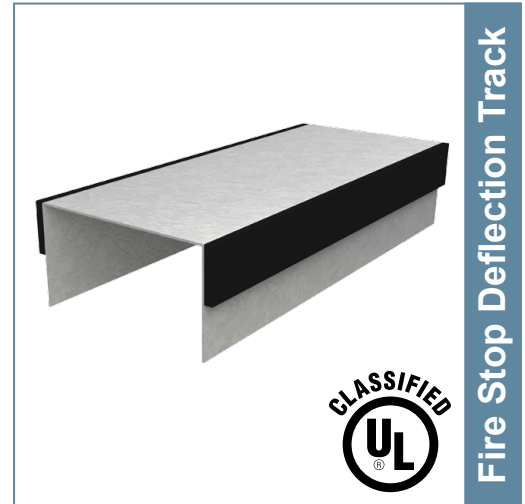
### Sustainability Credits:

For more details and LEED letters contact Technical Services at 888-437-3244 or visit [www.clarkdietrich.com/LEED](http://www.clarkdietrich.com/LEED)

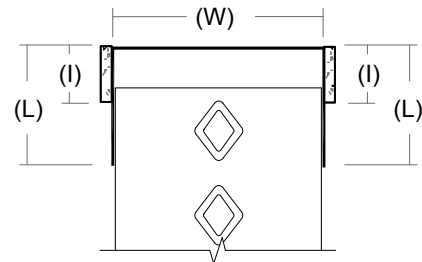
**LEED v4 MR Credit** -- Building Product Disclosure and Optimization: EPD (1 point) - Sourcing of Raw Materials (1 point) - Material Ingredients (1 point) - Construction and Demolition Waste Management (up to 2 points) - Innovation Credit (up to 2 points).

**LEED 2009 Credit MR 2 & MR 4** -- ClarkDietrich’s steel products are 100% recyclable and have a national average recycled content of 34.2% (19.8% post-consumer and 14.4% pre-consumer). If seeking a higher number to meet Credit MR 5, please contact us at ([info@clarkdietrich.com](mailto:info@clarkdietrich.com) / 888-437-3244)

### 09.22.16 (Non-Structural Metal Framing)



- **UL Classified and Listed Joint Systems**
- **Intumescent strip provides air, smoke and sound seals**
- **Patents: [www.cd-patents.com](http://www.cd-patents.com)**



### Project Information

Name:  
Address:

### Contractor Information

Name:  
Contact:  
Phone:  
Fax:

### Architect Information

Name:  
Contact:  
Phone:  
Fax: