

FastClip™ 3-1/2" Slide Clip (FCSC) 14 Gauge 3-1/2" long vertical slide deflection clip

ClarkDietrich FastClip™ Slide Clip deflection clips are used to attach exterior curtainwall studs to the building structure and provide for vertical building movement independent of the cold-formed steel framing. A FastClip deflection clip installs quickly with screws or powder-actuated fasteners, and provides adjustable standoff to ensure a plumb wall plane. FastClip Deflection Screws are provided with each clip to ensure friction-free sliding. Each clip is also embossed with fastening patterns to ensure accurate placement of fasteners.

For allowable loads for multiple connection options, reference the Clip & Connector Catalog or www.clarkdietrich.com for more information.

Product Data & Ordering Information:

Material	Structural Grade 50 Type H (ST50H), 50ksi (340 MPa)
Coating	G90 (Z275) hot-dipped galvanized coating
Thickness	14ga (68mil), 0.0713" Design thickness, 0.0677" Min. thickness
Dimensions	1-1/2" x 3-1/2" x 4-1/2" (38.1mm x 88.9mm x 114.5mm)
Packaging	25 pieces per box. Includes 55 FastClip deflection screws per box.
Product weight	0.550 lb/piece

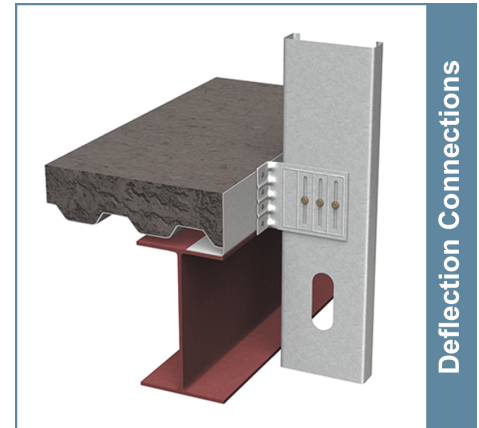
ASTM & Code Standards:

- Sheet steel meets or exceeds requirements of ASTM A1003
- Galvanized coating meets or exceeds requirements of ASTM A653
- Meets Intertek CCRR-0208 in compliance with the 2018, 2015 & 2012 International Building Code® (IBC) and International Residential Code® (IRC), as well as the 2017 Florida Building Code and 2016 California Building Code.
- Complies with the SFIA Manufacturing Compliance Certification Program for Connectors
- SDS & Product Certification Information available at www.clarkdietrich.com/SupportDocs

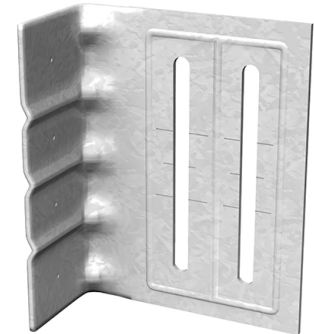
Alternative Products:

- EXTENDED Fast Clip™, Fast Strut™, Slide Clip

05.40.00 (Cold-Formed Metal Framing)



- Vertical movement up to 3" (1-1/2" up and 1-1/2" down).
- 3-1/2" FastClip™ permits up to 1" of standoff from the primary frame.
- FastClip™ Deflection Screws (included) provide frictionless slip connection.
- U.S. Patent No. 6,688,069



FastClip™ Deflection Screw

Sustainability Credits:

For more details and LEED letters contact Technical Services at 888-437-3244 or visit www.clarkdietrich.com/LEED

LEED v4 MR Credit -- Building Product Disclosure and Optimization: EPD (1 point) - Sourcing of Raw Materials (1 point) - Material Ingredients (1 point) - Construction and Demolition Waste Management (up to 2 points) - Innovation Credit (up to 2 points).

LEED 2009 Credit MR 2 & MR 4 -- ClarkDietrich's steel products are 100% recyclable and have a national average recycled content of 34.2% (19.8% post-consumer and 14.4% pre-consumer). If seeking a higher number to meet Credit MR 5, please contact us at (info@clarkdietrich.com / 888-437-3244)

Project Information

Name:
Address:

Contractor Information

Name:
Contact:
Phone:
Fax:

Architect Information

Name:
Contact:
Phone:
Fax: