

## Drift FastClip™ 3-1/2" Slide Clip (D-FCSC3.5-12)

### 12ga (97mil) Vertical & Lateral Slide Deflection Clip

ClarkDietrich Drift FastClip™ Slide Clips are used to attach exterior curtain-wall studs to the building structure and provide for both vertical and lateral movement. Proprietary Deflection Screws are provided with each clip for attachment to the wall studs and allow for 2" vertical deflection (1" up and down) to ensure friction-free sliding. Step bushing are provided for the connection to the structure and allow for 2" lateral deflection (1" left and right).

For allowable loads for multiple connection options, reference [www.clarkdietrich.com/DriftClip](http://www.clarkdietrich.com/DriftClip) for more information.

### Product Data & Ordering Information:

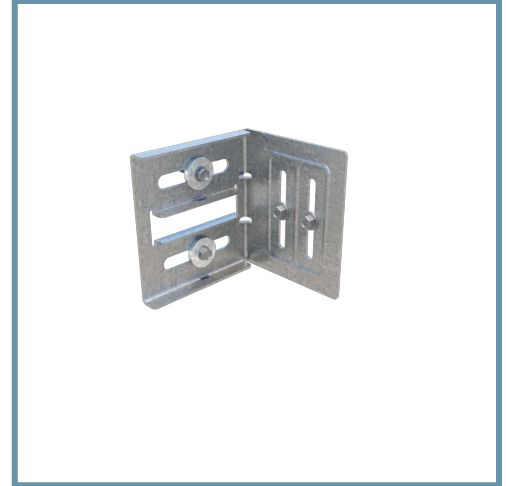
<b>Material</b>	Structural Grade 50 Type H (ST50H), 50ksi (340 MPa)
<b>Clip Length</b>	3-1/2"
<b>Thickness</b>	12ga (97mil), 0.1017" Design thickness, 0.0966" Min. thickness
<b>Coating</b>	G90 (Z275) hot-dipped galvanized coating
<b>Packaging</b>	25 clips per bucket Includes (55) Proprietary Deflection Screws & (50) Bushings Copper Bushing & Proprietary Deflection Screws for 14ga (68mil) Clips Silver Bushing & Proprietary Deflection Screws for 12ga (97mil) Clips

### Code Approvals & Performance Standards

- **ASTM A653** Standard Specification for Steel Sheet, Zinc-Coated (Galvanized) or Zinc-Iron Alloy-Coated (Galvannealed) by the Hot-Dip Process
- **ASTM A1003** Standard Specification for Steel Sheet, Carbon, Metallic- and Nonmetallic-Coated for Cold-Formed Framing Members
- **SDS For ASTM A1003 Steel Framing Products** For Interior Framing, Exterior Framing and Clips/Accessories

**Sustainability Credits** For more details and LEED letters contact Technical Services at 888-437-3244 or visit [clarkdietrich.com/LEED](http://clarkdietrich.com/LEED).

- **LEED v4.1 MR Credit:** Environmental Product Declarations: EPD (1 point) - Sourcing of Raw Materials (up to 2 points) - Material Ingredients (1 point) - Construction and Demolition Waste Management (up to 2 points)
- **LEED v4 MR Credit:** Building Product Disclosure and Optimization: EPD (1 point) - Sourcing of Raw Materials (1 point) - Material Ingredients (1 point) - Construction and Demolition Waste Management (up to 2 points) - Innovation Credit (up to 2 points).



- Vertical movement up to 2" (1" up and down)
- Lateral movement up to 2" (1" left and right)
- Proprietary Deflection Screws (included) provide frictionless slip connection
- U.S. Patent No. D814905



Proprietary  
HD Deflection Screw  
(10ga and 12ga Clips Only)

Silver Bushing & Proprietary Deflection  
Screws for 12ga (97mil) Clips