

## 3/4" Channel Clip (CC33)

### 33mil (20 Gauge) 3/4" U-Channel Lateral Bracing Clip

The ClarkDietrich CC33 clip is used to secure U-Channel or Cold Rolled Channel (CRC) to non-structural wall studs. The wall stud friction fit design allows for as little as one screw for the connection to the U-Channel. The CC33 clip is a stiffened, G90 galvanized steel clip that's tested and designed to facilitate the rapid, efficient installation of 3/4" U-Channel lateral bracing for non-structural interior wall framing constructed of ProSTUD® Drywall Framing or non-structural studs.

CC33 clips are fastened using #8 self-drilling screws driven through the clip hole into the U-Channel. More than one screw may be needed depending on design. Design loads & tables can be found at: [www.clarkdietrich.com/CC33](http://www.clarkdietrich.com/CC33)

- The CC33 clip should not be used in studs over 6" wide
- US Patent No. D822,455

#### Product Data & Ordering Information:

Material: 33ksi yield Strength  
Coating: G90  
Thickness: 20ga (33mil), 0.0346" Design Thickness, 0.0329" Min. Thickness  
Dimensions: Made to fit over 3/4" U-channel and inside a drywall punch-out  
Packaging: 200 pieces per bucket  
Product Weight: 0.12 lb/piece

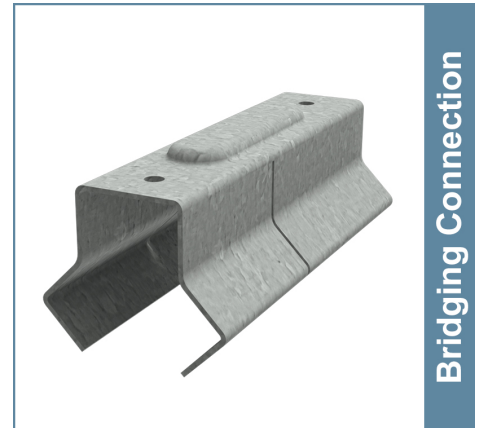
#### ASTM & Code Standards:

- Galvanized coating meets or exceeds requirements of ASTM C645
- Steel meets or exceeds mechanical and chemical requirements of ASTM A1003
- SDS & Product Certification Information is available at [www.clarkdietrich.com/SupportDocs](http://www.clarkdietrich.com/SupportDocs)

#### Alternative Products:

- SwiftClip™ (LS-Series)
- Spazzer® 9200 Spacing Bar

#### 09.22.16 (Non-Structural Metal Framing)



- 33mil (20ga) light-duty clip for use with 15mil to 33mil non-structural studs



#### Sustainability Credits:

For more details and LEED letters contact Technical Services at 888-437-3244 or visit [www.clarkdietrich.com/LEED](http://www.clarkdietrich.com/LEED)

**LEED v4 MR Credit** -- Building Product Disclosure and Optimization: EPD (1 point) - Sourcing of Raw Materials (1 point) - Material Ingredients (1 point) - Construction and Demolition Waste Management (up to 2 points) - Innovation Credit (up to 2 points).

**LEED 2009 Credit MR 2 & MR 4** -- ClarkDietrich's steel products are 100% recyclable and have a national average recycled content of 34.2% (19.8% post-consumer and 14.4% pre-consumer). If seeking a higher number to meet Credit MR 5, please contact us at ([info@clarkdietrich.com](mailto:info@clarkdietrich.com) / 888-437-3244)

#### Project Information

Name:  
Address:

#### Contractor Information

Name:  
Contact:  
Phone:  
Fax:

#### Architect Information

Name:  
Contact:  
Phone:  
Fax: