

## FastBridge™ Clip (FB43) 43mil (18 Gauge) U-Channel Lateral Bracing Clip

The ClarkDietrich FastBridge™ clip is used to secure U-Channel or Cold Rolled Channel (CRC) to structural wall studs when used in load-bearing or curtain wall applications. The wall stud friction fit design allows for as little as one screw for the connection to the U-Channel.

The FastBridge™ clip is a stiffened, G90 galvanized steel clip that's tested and designed to facilitate the rapid, efficient installation of 1-1/2" U-Channel lateral bracing for exterior curtain wall framing, load-bearing walls or high interior partitions constructed of structural studs.

FastBridge™ clips are fastened using #10 self-drilling screws driven through the clip hole into the U-Channel. More than one screw may be needed depending on design. Design loads & tables can be found at: [www.clarkdietrich.com/FastBridge](http://www.clarkdietrich.com/FastBridge).

The FastBridge™ clip should not be used in studs over 8" wide.

### Product Data & Ordering Information:

Material: 33ksi yield strength  
 Coating: G90  
 Thickness: 18ga (43mil), 0.0451" Design Thickness, 0.0428" Min. Thickness  
 Dimensions: Made to fit over 1-1/2" U-Channel and inside a 1-1/2" punchout  
 Packaging: 200 pieces per bucket  
 Product weight: 0.13 lb/piece

### ASTM & Code Standards:

- Galvanized sheet steel meets or exceeds requirements of ASTM A653
- SDS & Product Certification Information is available at [www.clarkdietrich.com/SupportDocs](http://www.clarkdietrich.com/SupportDocs)

### Alternative Products:

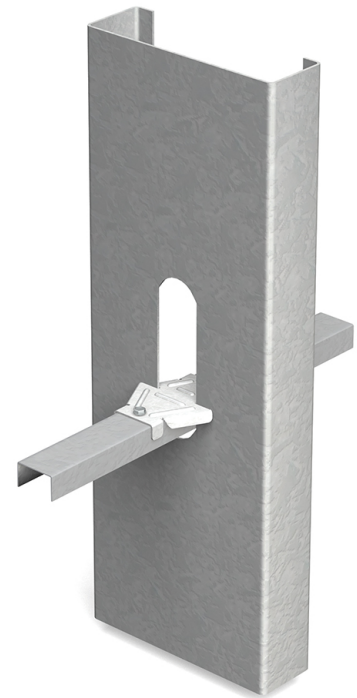
- SwiftClip™ (LS-Series), Spazzer® 5400 Bridging Bar

### 05.40.00 (Cold-Formed Metal Framing)



Bridging Connection

- 43mil (18ga) light-duty clip for use with 20ga to 16ga structural studs



### Sustainability Credits:

For more details and LEED letters contact Technical Services at 888-437-3244 or visit [www.clarkdietrich.com/LEED](http://www.clarkdietrich.com/LEED)

**LEED v4 MR Credit** -- Building Product Disclosure and Optimization: EPD (1 point) - Sourcing of Raw Materials (1 point) - Material Ingredients (1 point) - Construction and Demolition Waste Management (up to 2 points) - Innovation Credit (up to 2 points).

**LEED 2009 Credit MR 2 & MR 4** -- ClarkDietrich's steel products are 100% recyclable and have a national average recycled content of 34.2% (19.8% post-consumer and 14.4% pre-consumer). If seeking a higher number to meet Credit MR 5, please contact us at ([info@clarkdietrich.com](mailto:info@clarkdietrich.com) / 888-437-3244)

### Project Information

Name:  
Address:

### Contractor Information

Name:  
Contact:  
Phone:  
Fax:

### Architect Information

Name:  
Contact:  
Phone:  
Fax: