

Metal U-Trim #200-A (M20A)

Metal Trim

U-Trim, or Spackle J is used to provide maximum protection and clean finished edges on gypsum panels around door and window openings and when wallboard abuts dissimilar surfaces, such as suspended ceilings, beams, plaster, masonry and concrete. U-Trim is easily installed by sliding trim over the edge of the board and nailing or screwing through the knurled (long) flange. Installation is completed with application of joint compound for a smooth ready-to-paint surface.

Product Data & Ordering Information

Material: 0.012 min thickness, G30 galvanized
Dimensions: 1-1/4" leg x Width x 1/2" leg

Width	Length	Wt./Ctn.	Pcs./Ctn.
1/2"	8'	36 lbs	50
1/2"	10'	45 lbs	50
5/8"	8'	36 lbs	50
5/8"	10'	45 lbs	50

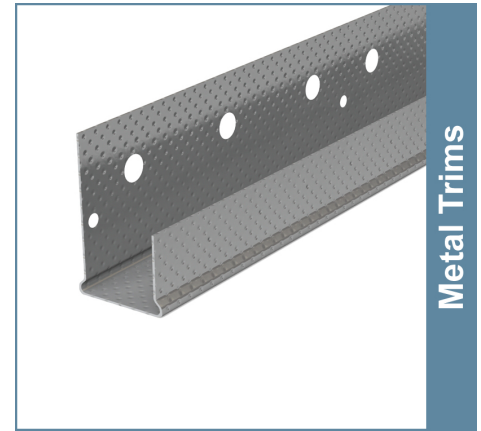
ASTM & Code Standards

- ASTM C1047
- SDS & Product Certification Information is available at www.clarkdietrich.com/SupportDocs

Storage

All stored materials shall be kept dry. Materials shall be stacked off the ground, supported on a level platform, and protected from the weather.

09.22.00 (Support for Plaster & Gypsum Board)



Metal Trims

- Rugged steel construction
- Galvanized for corrosion protection
- Knurled, perforated flange enhances compound adhesion



Sustainability Credits:

For more details and LEED letters contact Technical Services at 888-437-3244 or visit www.clarkdietrich.com/LEED

LEED v4 MR Credit -- Building Product Disclosure and Optimization: EPD (1 point) - Sourcing of Raw Materials (1 point) - Material Ingredients (1 point) - Construction and Demolition Waste Management (up to 2 points) - Innovation Credit (up to 2 points).

LEED 2009 Credit MR 2 & MR 4 -- ClarkDietrich's steel products are 100% recyclable and have a national average recycled content of 34.2% (19.8% post-consumer and 14.4% pre-consumer). If seeking a higher number to meet Credit MR 5, please contact us at (info@clarkdietrich.com / 888-437-3244)

Project Information

Name:
Address:

Contractor Information

Name:
Contact:
Phone:
Fax:

Architect Information

Name:
Contact:
Phone:
Fax: