

ClarkDietrich Moment Clip (MC105P)

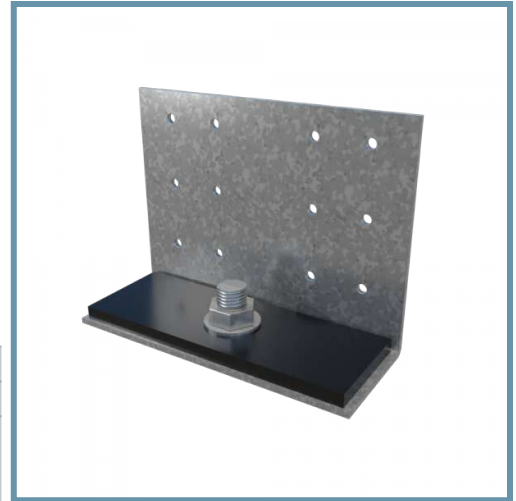
118mils (10ga) 5-1/2" Wide Moment Clip

ClarkDietrich moment clips are high-performance, cost effective solutions for knee wall-to-foundation connections and shear wall-to-foundation connections. These multi-application clips feature a 1/4" thick A36 steel stiffening plate that provides superior design values for maximum performance. The moment clips are designed to resist horizontal, torsional and vertical (uplift) loads. These clips are prepunched with a series of attachment holes for steel framing connections and a 1/2" anchor bolt hole for foundation connections.

For allowable shear, tension and moment loads, see load tables at www.clarkdietrich.com/MomentClip

Product Data & Ordering Information:

Material:	Structural Grade 50 Type H (ST50H), 50ksi (340 MPa)
Coating:	G90 (Z275) hot-dipped galvanized coating
Thickness:	118mils (10ga) 0.1242" Design thickness 0.1180" Minimum thickness
Dimensions:	2" x 4" x 5-1/2" Wide (50.8mm x 101.6mm x 139.7mm)
Packaging:	25 pieces per bucket
Product Weight:	1.18 lb / piece



- Multi-Application Clip
- Knee wall-to-foundation connection
- Shear wall-to-foundation connection

Code Approvals & Performance Standards

- [ASTM A36](#) Standard Specification for Carbon Structural Steel
- [ASTM A653](#) Standard Specification for Steel Sheet, Zinc-Coated (Galvanized) or Zinc-Iron Alloy-Coated (Galvannealed) by the Hot-Dip Process
- [ASTM A1003](#) Standard Specification for Steel Sheet, Carbon, Metallic- and Nonmetallic-Coated for Cold-Formed Framing Members
- [SDS For ASTM A1003 Steel Framing Products](#) For Interior Framing, Exterior Framing and Clips/Accessories

Alternative Products:

- [EasyClip™ D or T-Series™ Tall Anchor Clip](#)
- [ClarkDietrich Pony Wall](#)

Sustainability Credits For more details and LEED letters contact Technical Services at 888-437-3244 or visit clarkdietrich.com/LEED.

- **LEED v4.1 MR Credit:** Environmental Product Declarations: EPD (1 point) - Sourcing of Raw Materials (up to 2 points) - Material Ingredients (1 point) - Construction and Demolition Waste Management (up to 2 points)
- **LEED v4 MR Credit:** Building Product Disclosure and Optimization: EPD (1 point) - Sourcing of Raw Materials (1 point) - Material Ingredients (1 point) - Construction and Demolition Waste Management (up to 2 points) - Innovation Credit (up to 2 points).

