

3-1/2" Weep Screeds

Designed to direct moisture from stucco and to act as a stop

Designed to direct moisture from stucco and to act as a stop. Install on frame construction where stucco and foundation walls meet.

The 3-1/2" solid attachment flange makes this style weep screed ASTM C1063, IBC and IRC code compliant.

Product Data & Ordering Information:

Product code	(A) Ground	(B) Flange	(C) Overall Height	Length	Pcs./Box
WS38-350U	3/8"	3-1/2"	4"	10'	50
WS50-350U	1/2"	3-1/2"	4"	10'	50
WS58-350U	5/8"	3-1/2"	4"	10'	40
WS75-350U	3/4"	3-1/2"	4"	10'	40
WS78-350U	7/8"	3-1/2"	4"	10'	30
W138-350U	1-3/8"	3-1/2"	4"	10'	30

Note: Also available with an extended (1/2") bottom leg to go under sheathing. To order, add L to the product code, example: WSL50-350U.

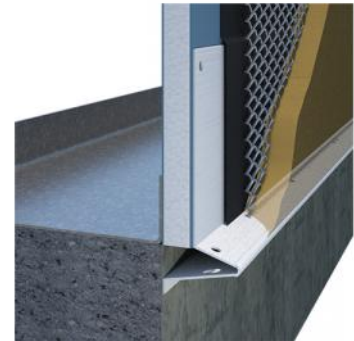
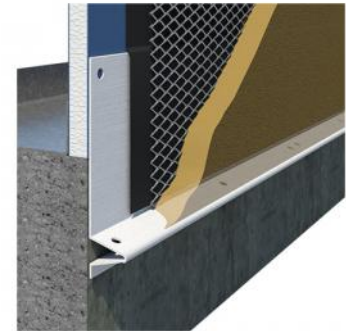
ASTM & Code Standards:

- Material: ASTM D1784 and D4216 cell Class 13244C
- Installation: ASTM C1063 Installation of Metal Plaster Base Systems, C1780 Standard Practice for Installation Methods for Adhered Veneer Stone
- SDS & Product Certification Information is available at www.clarkdietrich.com/SupportDocs
- Colors available: Standard color White or Tan, Brown, Gray and Black. Call for pricing.

Storage:

All stored materials shall be kept dry. Materials shall be stacked off the ground, supported on a level platform, and protected from the weather.

04.73.00 (Manufactured Stone Masonry)



Project Information

Name:
Address:

Contractor Information

Name:
Contact:
Phone:
Fax:

Architect Information

Name:
Contact:
Phone:
Fax: