

#15 Double-V Control Joint (VVJZ)

Expanded flange zinc control joint

#15 Expanded flange control joint (Double-V) is used to relieve stresses in large plastered areas of walls, ceilings and stucco areas. This nearly inconspicuous expanded wing control joint minimizes cracking and assures proper plaster and stucco thickness. Follow use provisions outlined in ASTM C1063.

Product Data & Ordering Information:

Material: .018 99.97% pure Zinc, compliant with ASTM B-69
Also available in G-60 Hot-Dipped Galvanized Steel

Dimensions: Nominal 2-7/8" Full Wing Flange

Ground	Length	Pcs./Ctn.	Ft./Ctn.	Wt./Ctn.	Ctn./Skid
1/2"	10'	24	240	54 lbs.	27
3/4"	10'	24	240	69 lbs.	30
7/8"	10'	24	240	76 lbs.	30

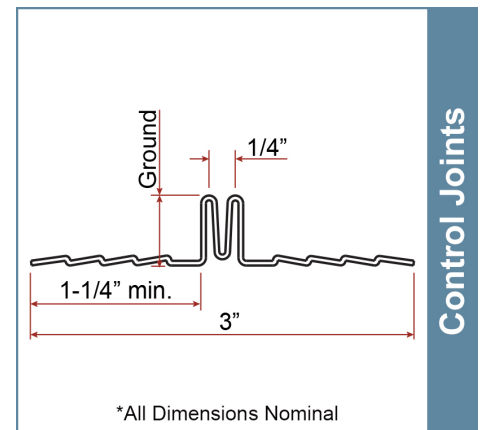
ASTM & Code Standards:

- ASTM C1063
- Zinc meets or exceeds requirements of ASTM B69
- Installation: ASTM C841 (interior), C1063 (exterior) and EMLA-920
- SDS & Product Certification Information is available at www.clarkdietrich.com/SupportDocs

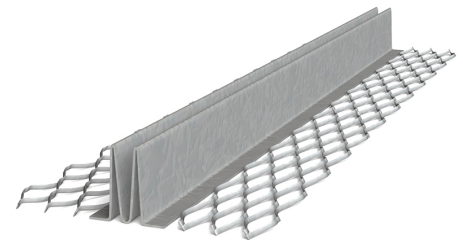
Storage:

All stored materials shall be kept dry. Materials shall be stacked off the ground, supported on a level platform, and protected from the weather and surface contamination conforming to ASTM C1063.

09.22.36 (Metal Lath)



Control Joints



Project Information

Name:
Address:

Contractor Information

Name:
Contact:
Phone:
Fax:

Architect Information

Name:
Contact:
Phone:
Fax: